

**Datasheet for #sb1986 DN**Recommendations:

Please read the starter kit user manual (at least installation chapter 5), if available, and have a look at the FAQ at <http://www.alpeslasers.ch/alfaq.pdf>

**WARNING:** Operating the laser with longer pulses, shorter period, or higher voltage or current than specified in this document may cause damage and will result in loss of warranty, unless agreed upon with Alpes Lasers!

**WARNING:** Beware of the polarity of the laser. This laser has to be powered with positive bias on the laser contact (= bonding pad, corresponding to the label "laser" on the LLH) and the negative bias on the base contact (= submount, corresponding to the label "base" on the LLH).

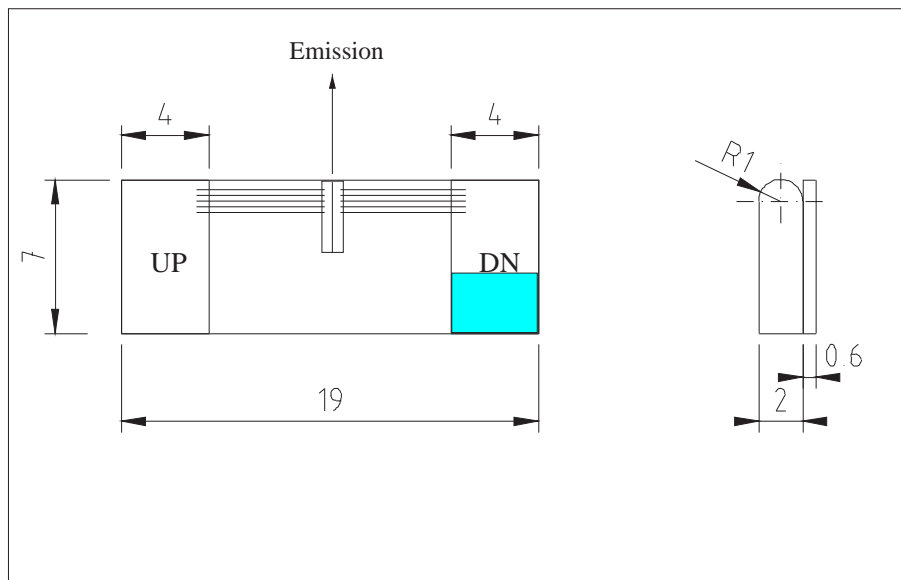


Figure 1: Support mounting for #sb1986 DN (please note that the laser is connected to the DN pad drawn in blue)

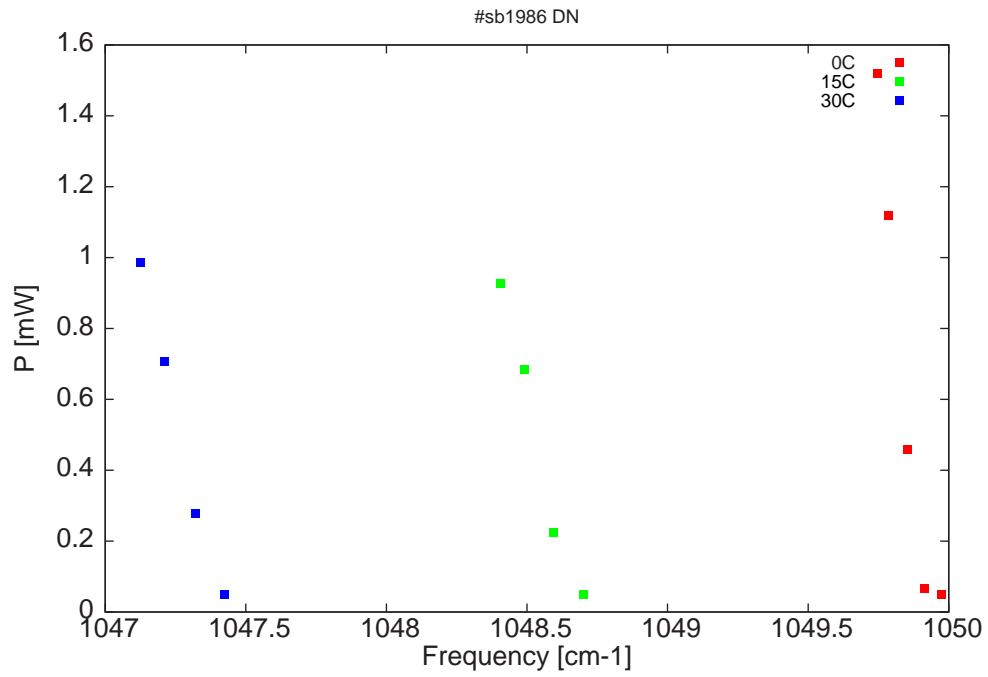


Figure 2: Output power as a function of the singlemode emission frequencies and temperatures

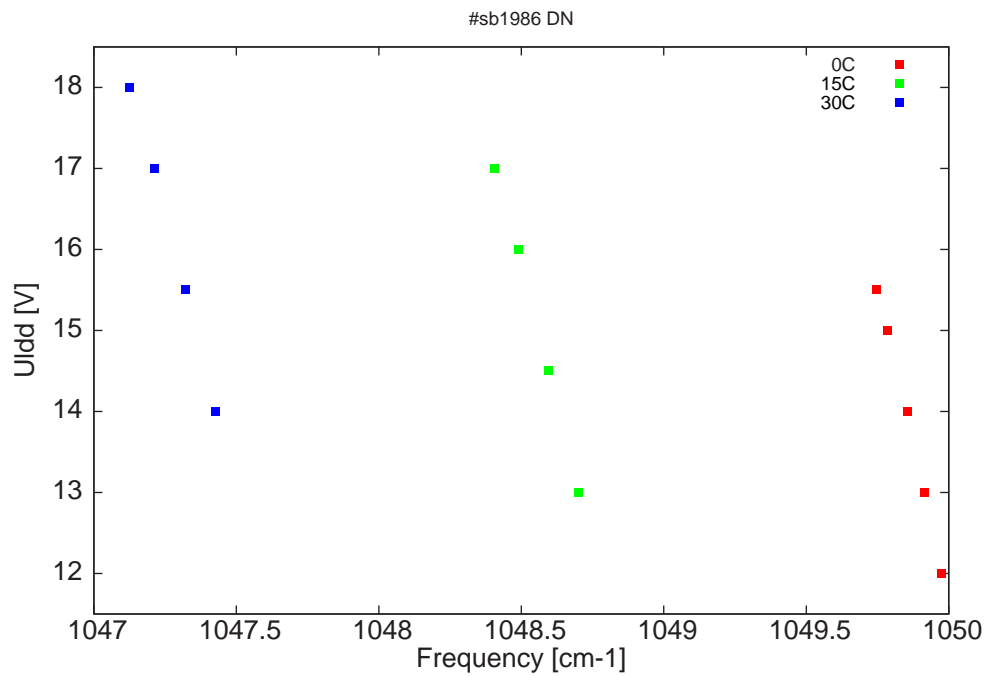


Figure 3: DC voltage fed to LDD ( $U_{ldd}$ ) as a function of the singlemode emission frequencies and temperatures

$\lambda$ [nm]	$\nu$ [cm <sup>-1</sup> ]	P[mW]	Temp[°C]	$U_{LDD}$ [V]	$I_{pulse}$ [A]
9524.1	1050	0.1	0	12	2.31
9524.6	1049.9	0.1	0	13	2.69
9525.1	1049.9	0.5	0	14	3.05
9525.8	1049.8	1.1	0	15	3.4
9526.1	1049.7	1.5	0	15.5	3.53
9535.6	1048.7	0.1	15	13	2.71
9536.6	1048.6	0.2	15	14.5	3.24
9537.5	1048.5	0.7	15	16	3.69
9538.3	1048.4	0.9	15	17	4.09
9547.2	1047.4	0.1	30	14	3.04
9548.2	1047.3	0.3	30	15.5	3.53
9549.2	1047.2	0.7	30	17	4.1
9550	1047.1	1	30	18	4.42

Table 1 : singlemode optical output power as function of operating parameters

WARNING: junction-down mounting, ie the cathode is connected to the copper carrier and the anode to the ceramic pad.

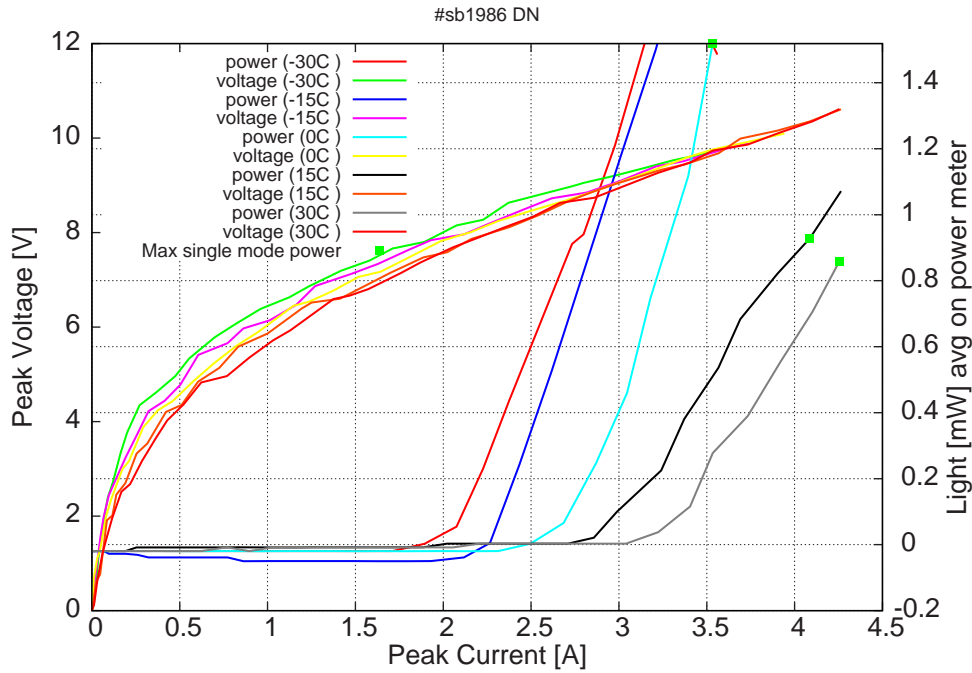


Figure 4: peak voltage and average power vs peak current at 2% duty-cycle (50ns pulses on the laser, 2.5 $\mu$ s period) (the solid squares indicate the maximum singlemode emitted power)

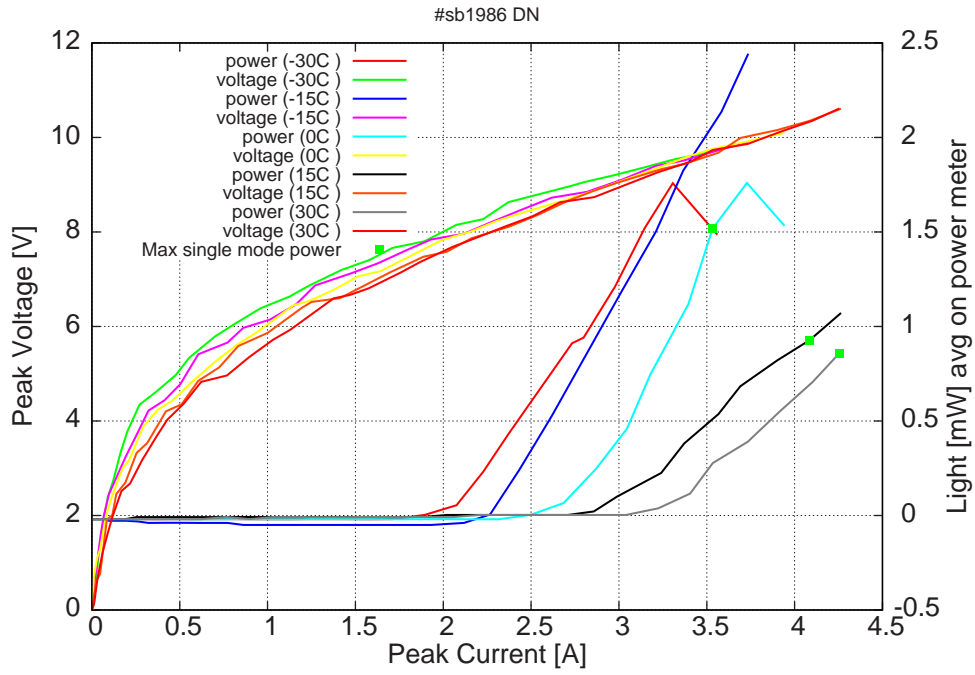


Figure 5: peak voltage and average power vs peak current at 2% duty-cycle (50ns pulses on the laser,  $2.5\mu\text{s}$  period) (including the multimode region)

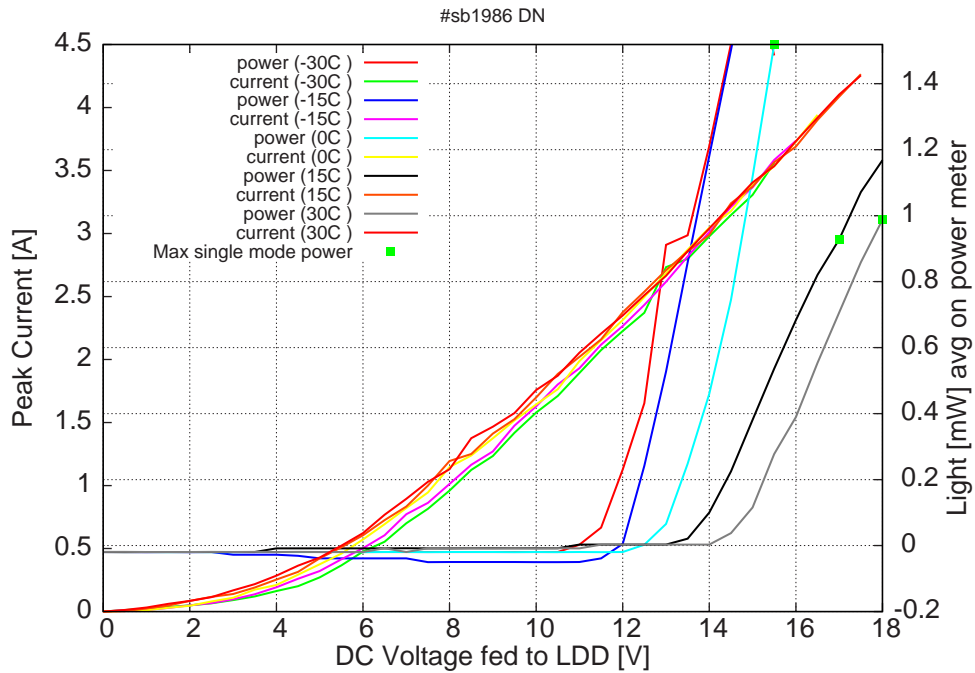


Figure 6: peak current and average power vs LDD voltage at 2% duty-cycle (50ns pulses on the laser,  $2.5\mu\text{s}$  period) (the solid squares indicate the maximum singlemode emitted power)

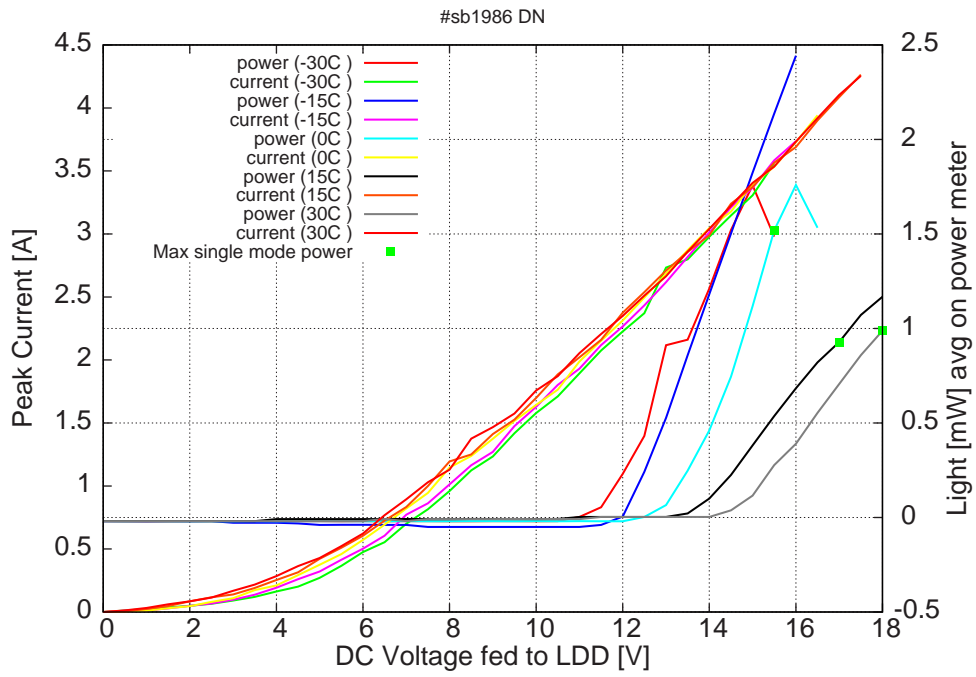
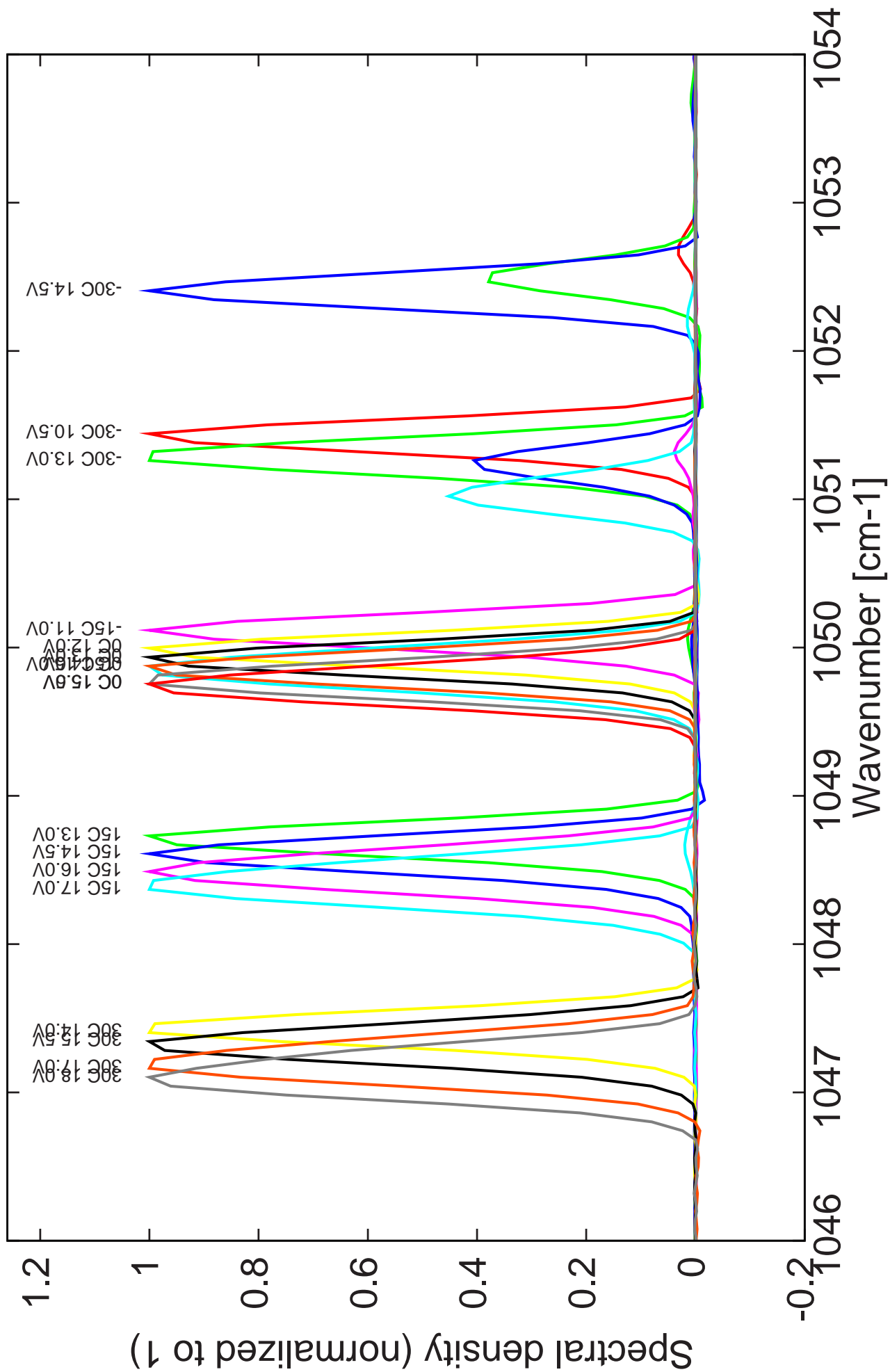


Figure 7: peak current and average power vs LDD voltage at 2% duty-cycle (50ns pulses on the laser,  $2.5\mu\text{s}$  period) (including the multimode region)

Figure 6: spectra at different temperatures for various LDD voltages at 2% duty-cycle (22ns pulses on the laser)



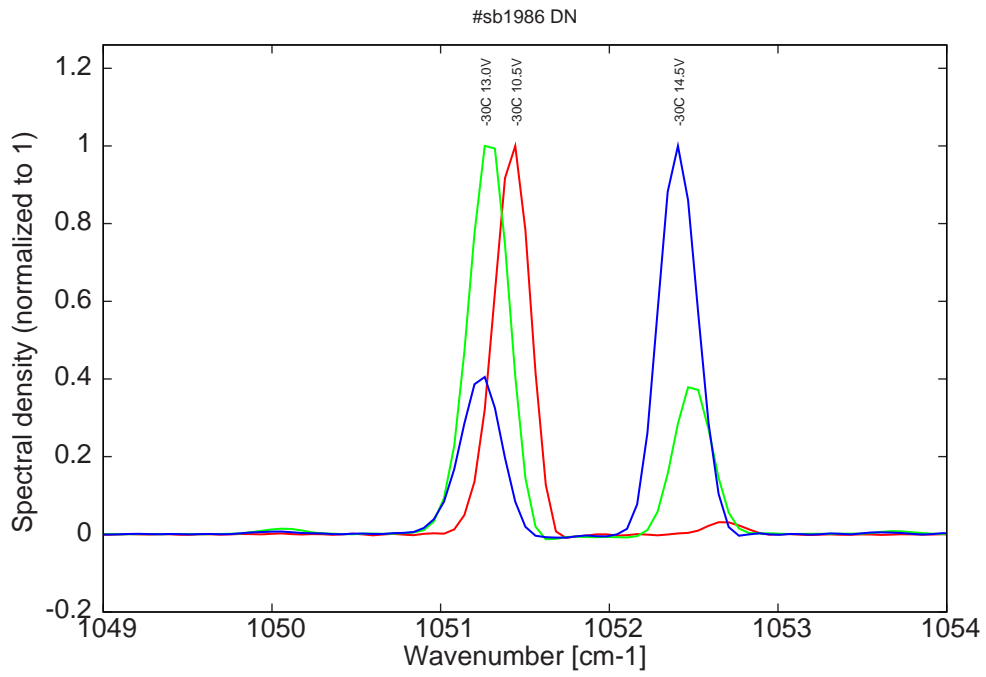


Figure 8: spectra at -30C at 2% duty-cycle (22ns pulses on the laser) for various LDD voltages (all multimode)

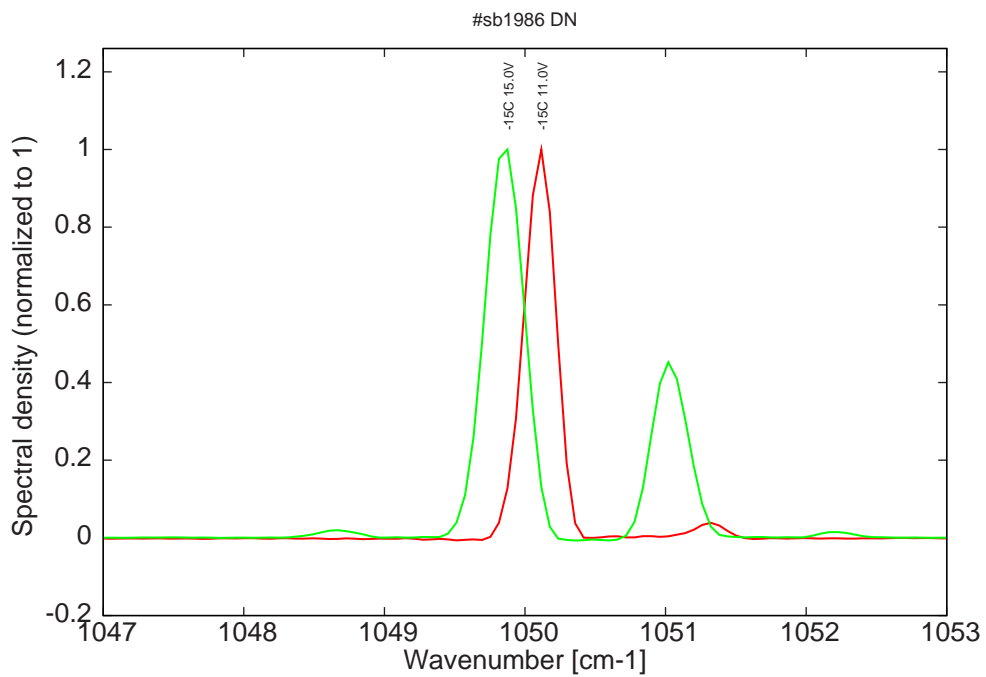


Figure 9: spectra at -15C at 2% duty-cycle (22ns pulses on the laser) for various LDD voltages (all multimode)

Figure 9: spectra between 0C and 30C for various LDD voltages at 2% duty-cycle (all monomode)

