

**Datasheet for #sbcw12572 DN**

Recommendations:

Please read the User Manual and have a look at the FAQ at <http://www.alpeslasers.ch/?a=142>

**WARNING:** Operating the laser with higher current or voltage than specified in this document may cause damage and will result in loss of warranty, unless Alpes Lasers has permitted to do so!

**WARNING:** Beware of the polarity of the laser. This laser has to be powered with negative bias and positive bias on the specific zones drawn below. To use with an ILX Lightwave LDX-3232 laser driver, or equivalent.

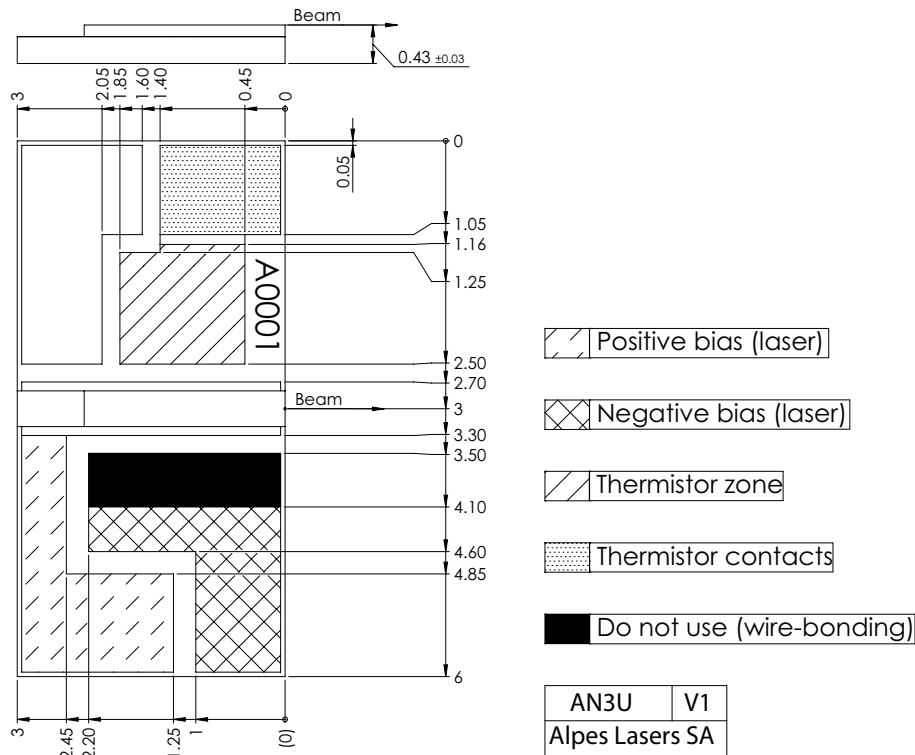


Figure 1: Mechanical and electrical interface for #sbcw12572 DN (please note that AlN submount numbering is A05J6)

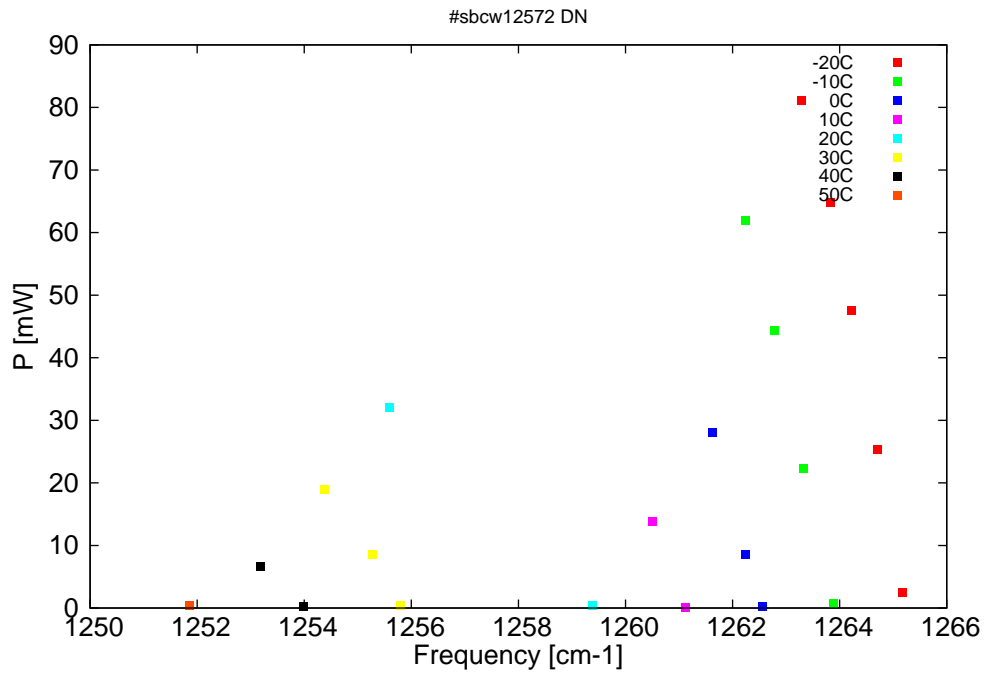


Figure 2: Output power as a function of the singlemode emission frequencies and temperatures

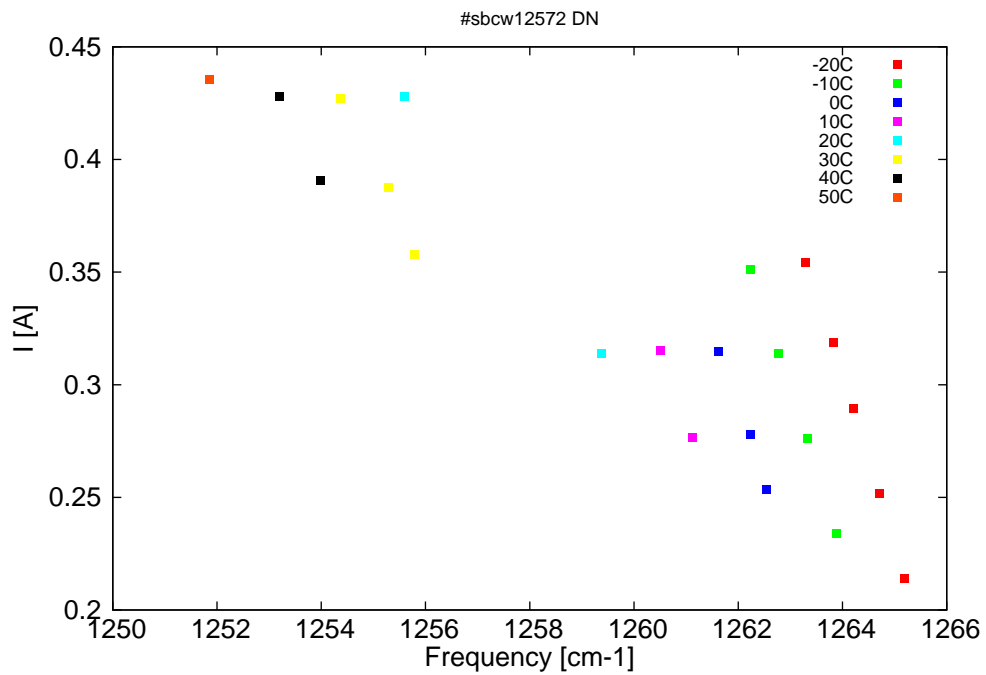


Figure 3: Applied DC current as a function of singlemode emission frequencies and temperatures

$\lambda$ [nm]	$\nu$ [cm <sup>-1</sup> ]	P[mW]	Temp[°C]	$U_{LASER}$ [V]	I[A]
7904	1265.2	2.4	-20	7.9	0.21
7907	1264.7	25.4	-20	8.1	0.25
7910	1264.2	47.5	-20	8.3	0.29
7912.5	1263.8	64.7	-20	8.5	0.32
7915.9	1263.3	81.1	-20	8.7	0.35
7912.1	1263.9	0.7	-10	7.9	0.23
7915.6	1263.3	22.3	-10	8.2	0.28
7919.1	1262.8	44.4	-10	8.4	0.31
7922.5	1262.2	62	-10	8.6	0.35
7920.5	1262.5	0.2	0	8	0.25
7922.5	1262.2	8.6	0	8.1	0.28
7926.3	1261.6	28	0	8.4	0.31
7929.5	1261.1	0.1	10	8.1	0.28
7933.3	1260.5	13.9	10	8.3	0.32
7940.4	1259.4	0.4	20	8.3	0.31
7964.4	1255.6	32	20	8.9	0.43
7963.1	1255.8	0.4	30	8.5	0.36
7966.3	1255.3	8.5	30	8.6	0.39
7972.1	1254.4	18.9	30	8.8	0.43
7974.6	1254	0.2	40	8.6	0.39
7979.6	1253.2	6.6	40	8.8	0.43
7988.1	1251.9	0.4	50	8.8	0.44

Table 1: Singlemode optical output power as function of operating parameters.

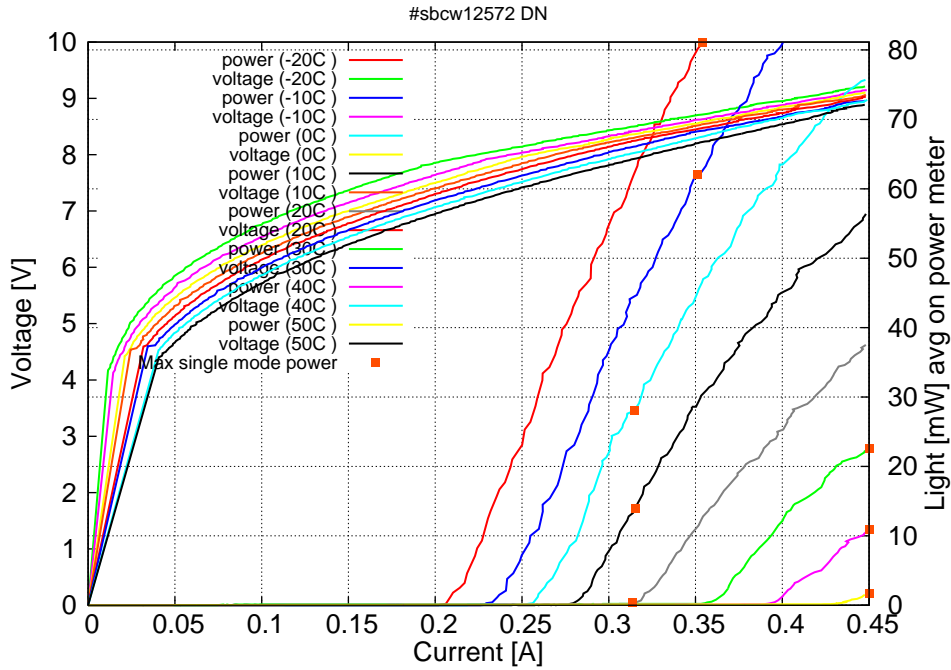


Figure 4: voltage and avg power vs current in continuous-wave operation (the solid squares indicate the maximum singlemode emitted power)

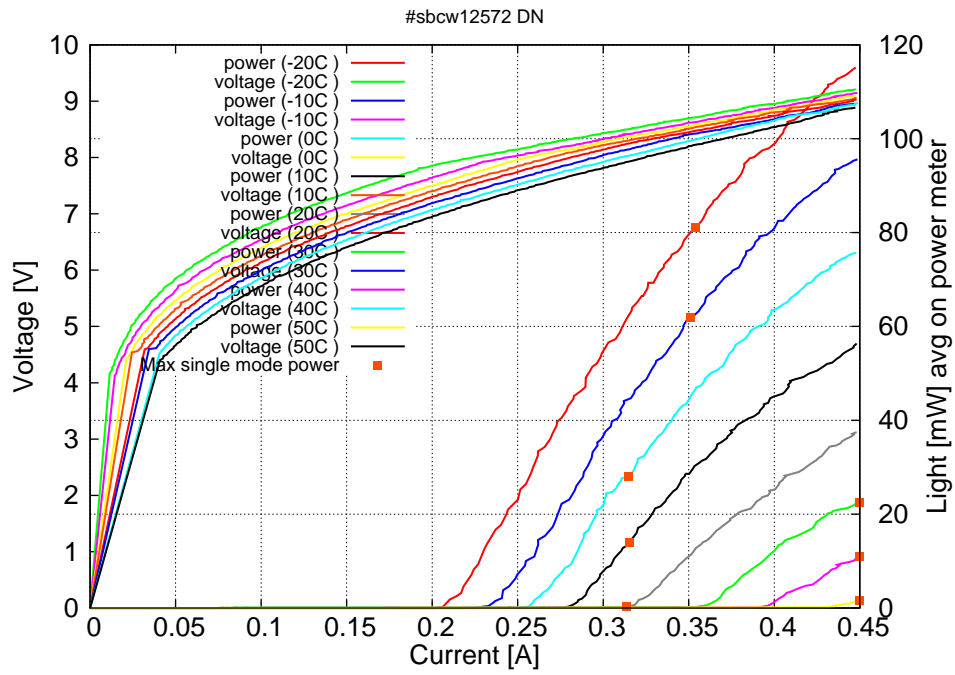
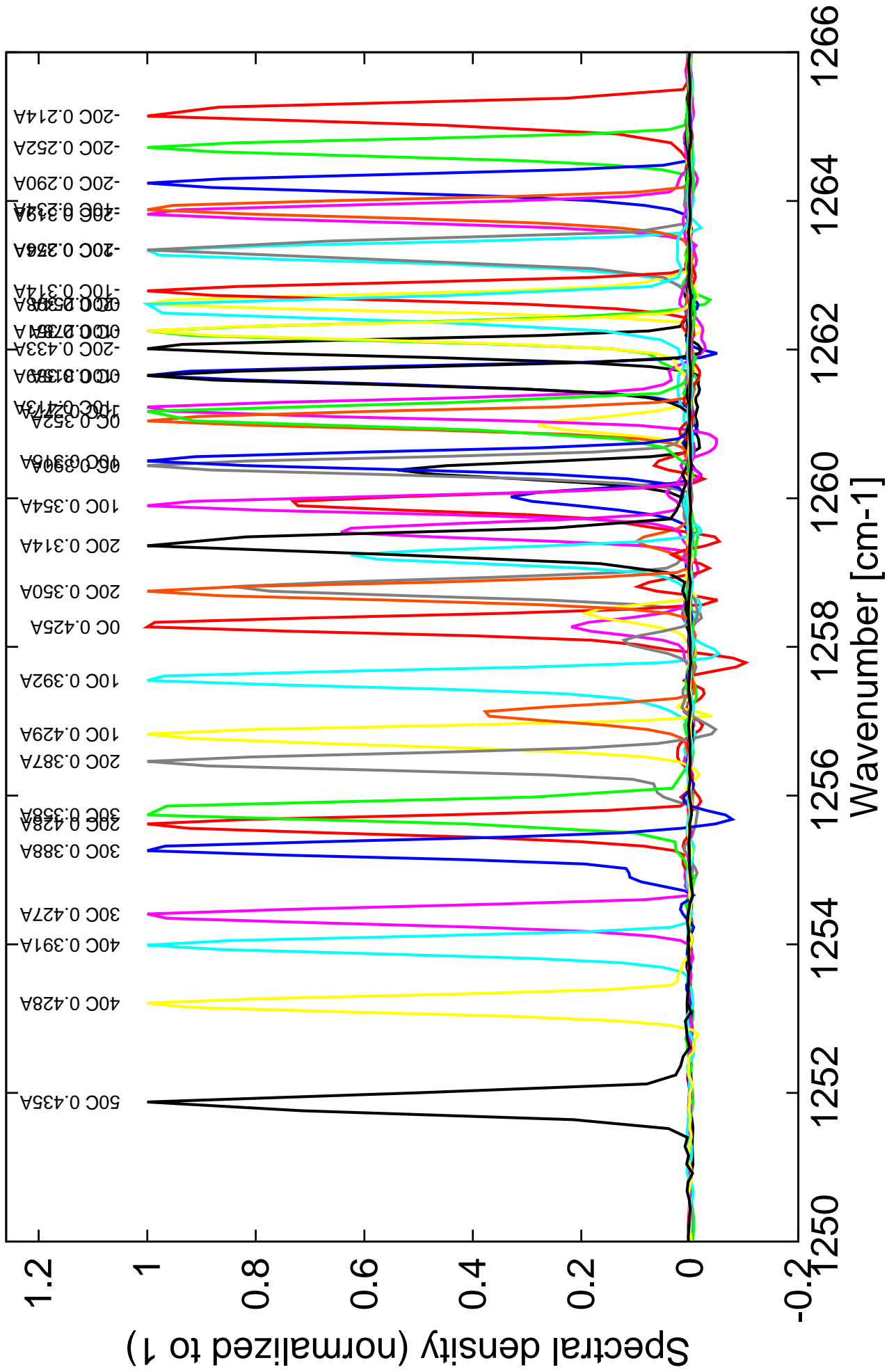


Figure 5: voltage and avg power vs current in continuous-wave operation (including the multimode region)

Note: at -20C:  $I_{th}=0.21A$  /  $V_{th}=7.9V$  (2-wires measurements). Maximum operation current: 0.450A for all temperatures.

Figure 4: spectra at different temperatures for various DC currents



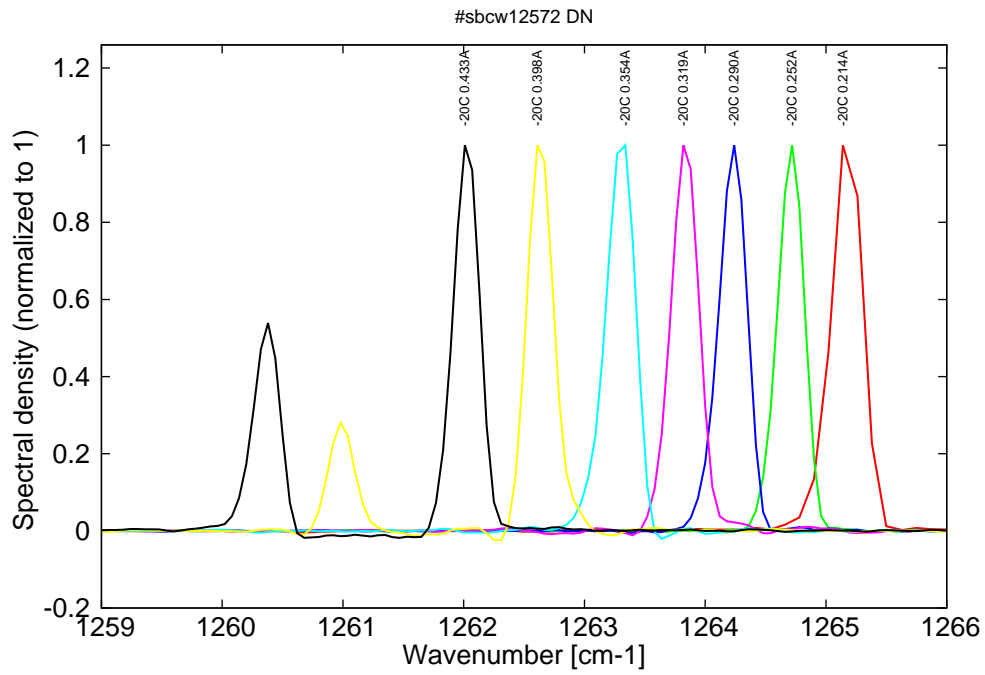


Figure 6: spectra at -20C for various DC currents (monomode on mode 1 up to 0.355A, then becomes bimode)

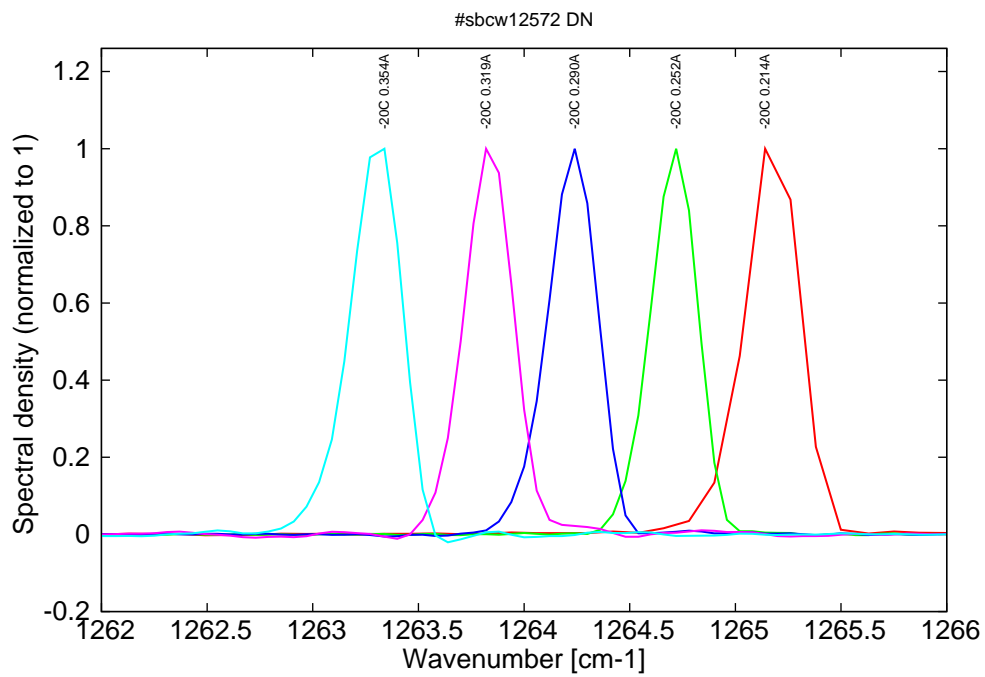


Figure 7: spectra at -20C for various DC currents (monomode range)

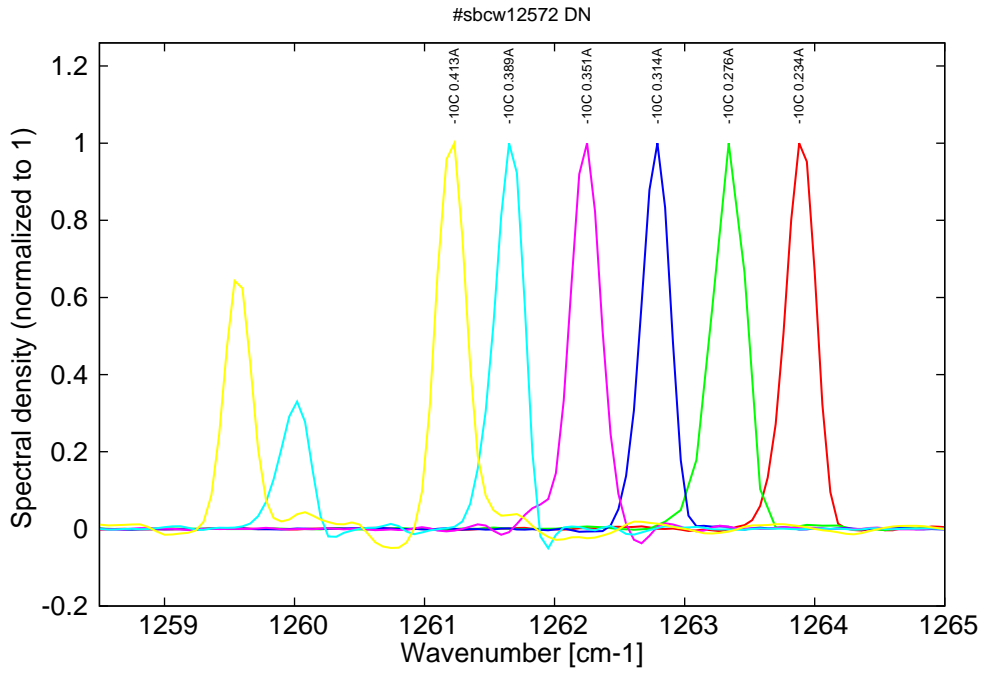


Figure 8: spectra at -10C for various DC currents (monomode on mode 1 up to 0.355A, then becomes bimode)

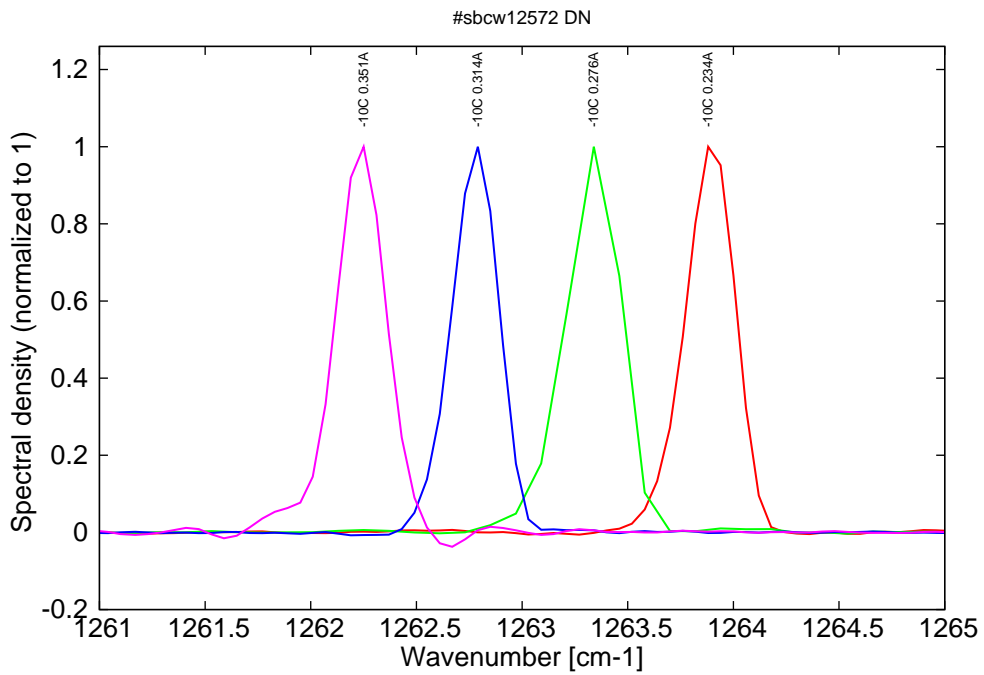


Figure 9: spectra at -10C for various DC currents (monomode range)

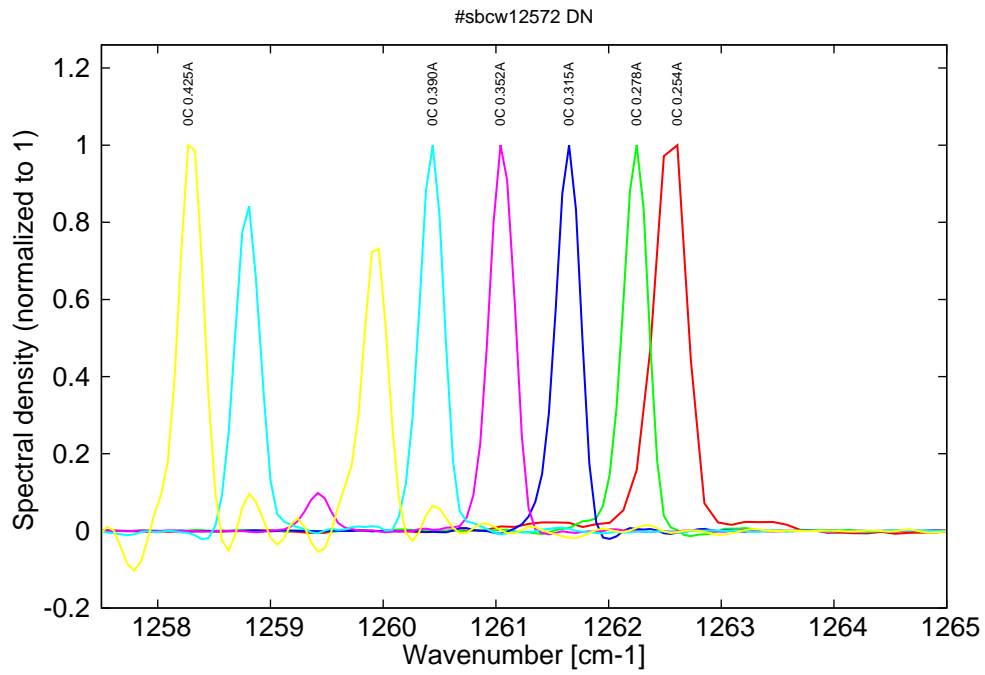


Figure 10: spectra at 0C for various DC currents (monomode on mode 1 up to 0.315A, then becomes bimode)

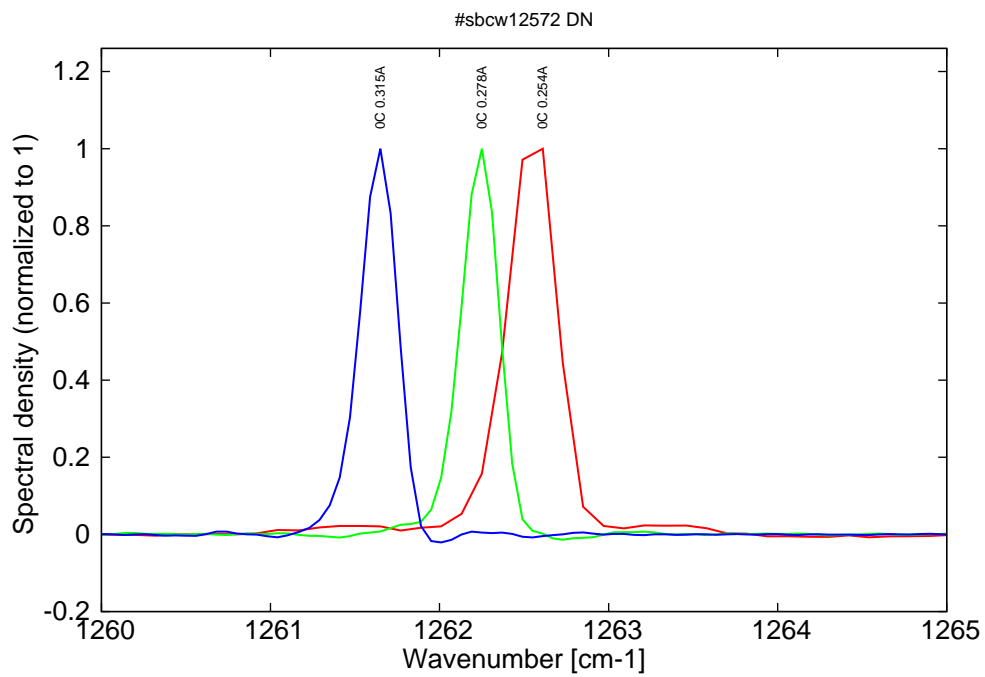


Figure 11: spectra at 0C for various DC currents (monomode range)

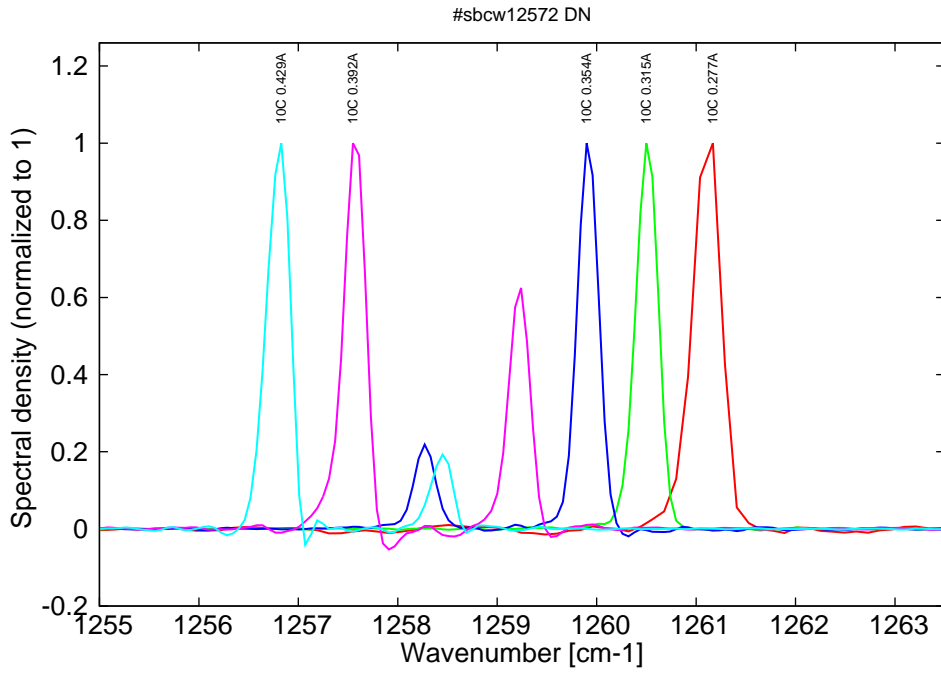


Figure 12: spectra at 10C for various DC currents (monomode on mode 1 up to 0.315A, then becomes bimode)

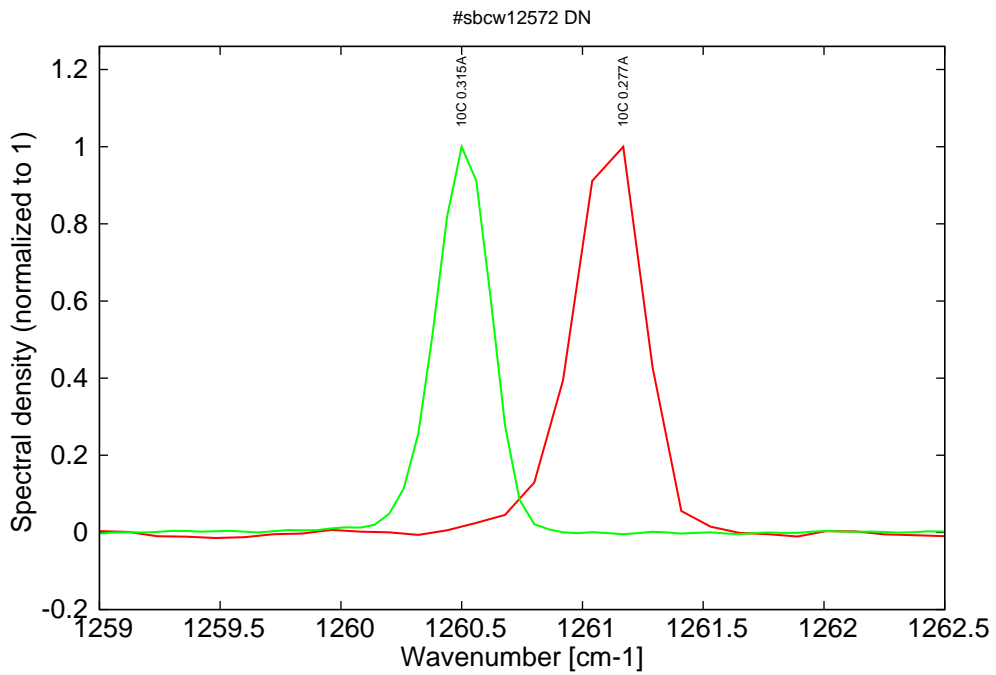


Figure 13: spectra at 10C for various DC currents (monomode range)

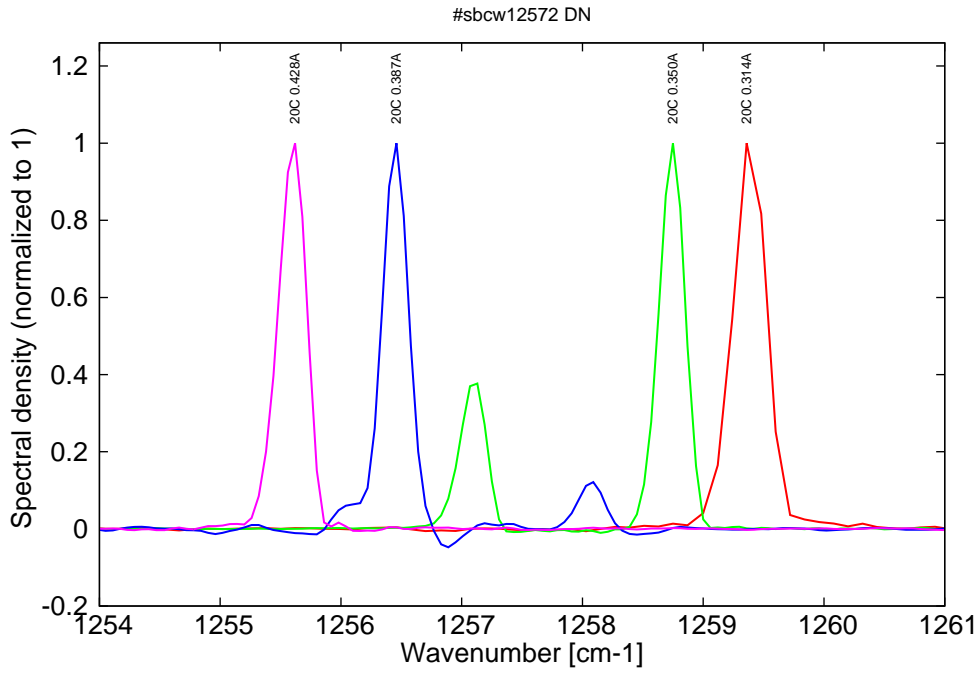


Figure 14: spectra at 20C for various DC currents (monomode on mode 1 up to 0.315A, then becomes bimode up to 0.39A, then becomes monomode on mode 2)

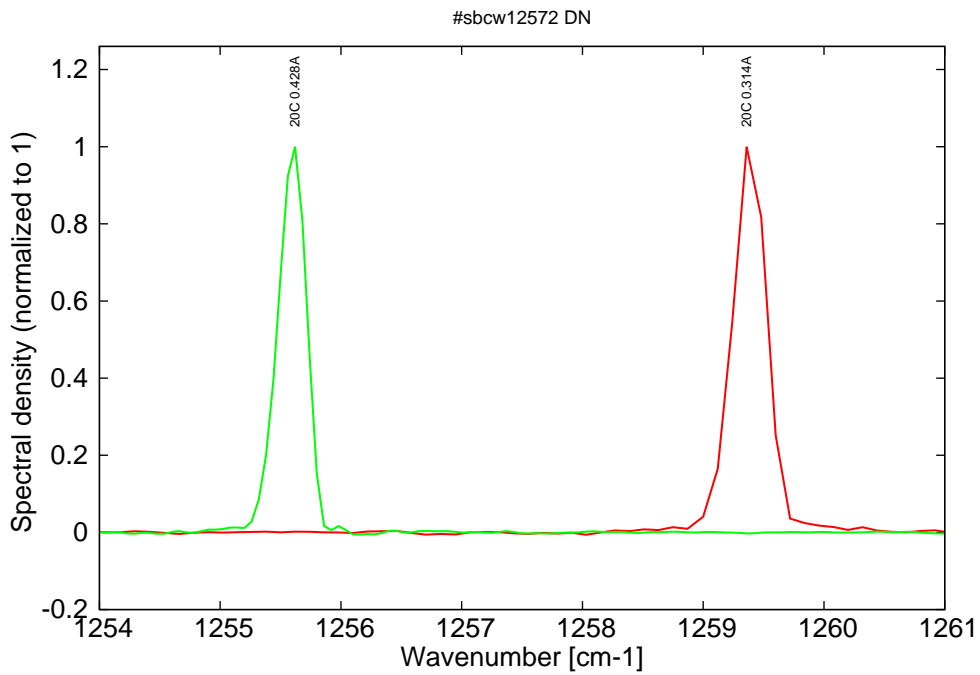


Figure 15: spectra at 20C for various DC currents (monomode ranges)

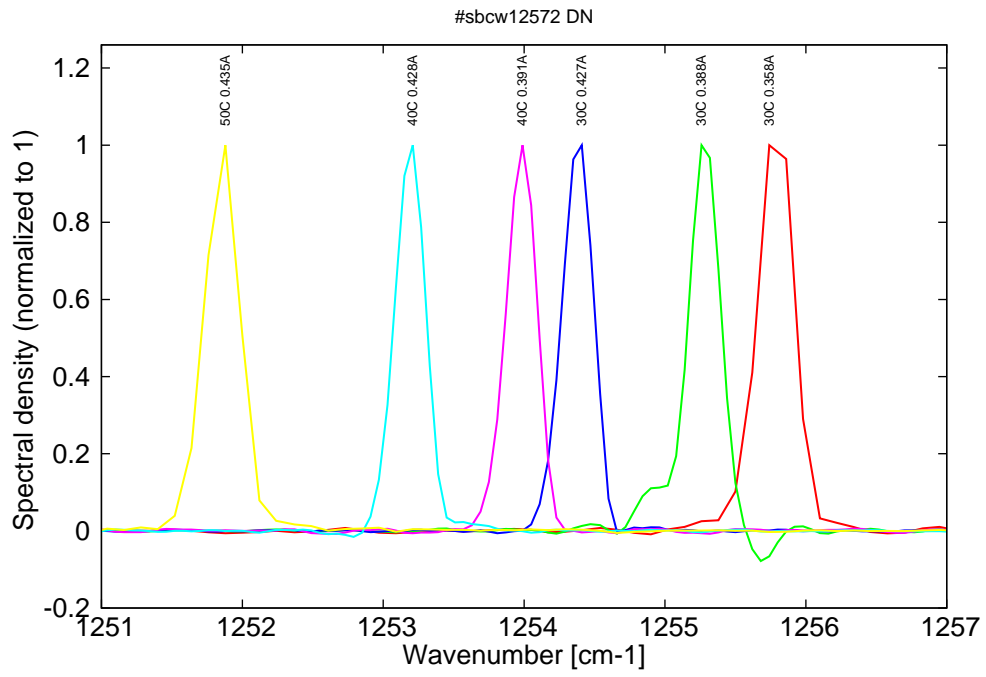


Figure 16: spectra between 30C and 50C for various DC currents (all monomode on mode 2)