

Datasheet for #sbcw15188 DN

Recommendations:

Please read the User Manual and have a look at the FAQ at <http://www.alpeslasers.ch/?a=142>

WARNING: Operating the laser with higher current or voltage than specified in this document may cause damage and will result in loss of warranty, unless Alpes Lasers has permitted to do so!

WARNING: Beware of the polarity of the laser. This laser has to be powered with negative bias and positive bias on the specific zones drawn below. To be used with a high compliance CW laser driver capable of reaching the operating current and voltage indicated in this datasheet, or up to 2.5A/20V.



Figure 1: Mechanical and electrical interface for #sbcw15188 DN (please note that AlN submount numbering is A0CHU)

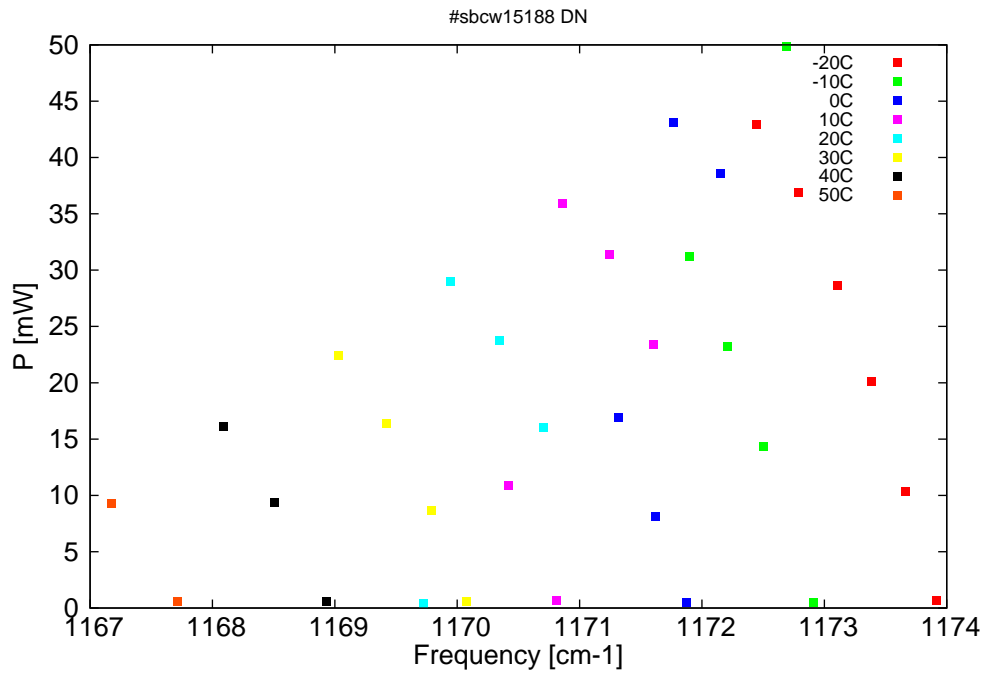


Figure 2: Output power as a function of the singlemode emission frequencies and temperatures

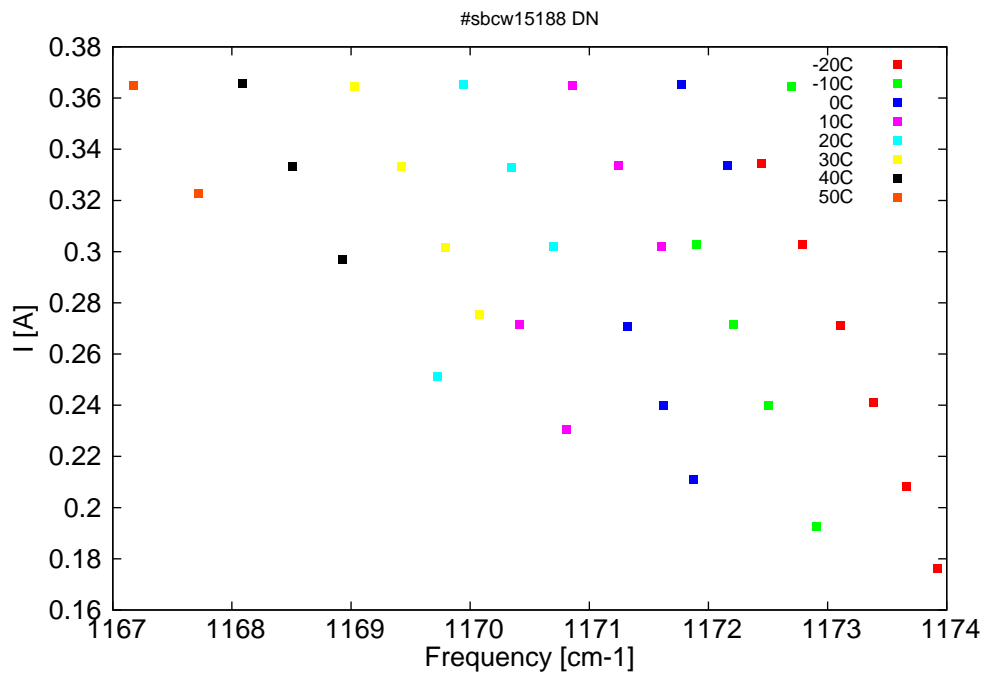


Figure 3: Applied DC current as a function of singlemode emission frequencies and temperatures

λ [nm]	ν [cm ⁻¹]	P[mW]	Temp[°C]	U_{LASER} [V]	I[A]
8518.5	1173.9	0.7	-20	8	0.18
8520.4	1173.7	10.4	-20	8.3	0.21
8522.3	1173.4	20.2	-20	8.6	0.24
8524.4	1173.1	28.6	-20	8.9	0.27
8526.7	1172.8	36.9	-20	9.2	0.3
8529.2	1172.4	42.9	-20	9.5	0.33
8525.8	1172.9	0.5	-10	8	0.19
8528.7	1172.5	14.4	-10	8.5	0.24
8530.9	1172.2	23.3	-10	8.8	0.27
8533.2	1171.9	31.2	-10	9.1	0.3
8527.4	1172.7	49.9	-10	9.7	0.36
8533.3	1171.9	0.5	0	8.1	0.21
8535.2	1171.6	8.1	0	8.4	0.24
8537.4	1171.3	16.9	0	8.7	0.27
8531.3	1172.2	38.6	0	9.3	0.33
8534.1	1171.8	43.1	0	9.6	0.37
8541.1	1170.8	0.7	10	8.2	0.23
8544	1170.4	10.9	10	8.6	0.27
8535.3	1171.6	23.4	10	8.9	0.3
8537.9	1171.2	31.4	10	9.2	0.33
8540.8	1170.9	35.9	10	9.5	0.37
8549	1169.7	0.4	20	8.3	0.25
8541.9	1170.7	16	20	8.8	0.3
8544.5	1170.3	23.7	20	9.1	0.33
8547.4	1169.9	29	20	9.4	0.37
8546.4	1170.1	0.6	30	8.4	0.28
8548.5	1169.8	8.6	30	8.7	0.3
8551.2	1169.4	16.4	30	9	0.33
8554.1	1169	22.5	30	9.2	0.36
8554.8	1168.9	0.6	40	8.5	0.3
8557.9	1168.5	9.4	40	8.8	0.33
8561	1168.1	16.1	40	9.1	0.37
8563.7	1167.7	0.5	50	8.7	0.32
8567.7	1167.2	9.3	50	9	0.36

Table 1: Singlemode optical output power as function of operating parameters.

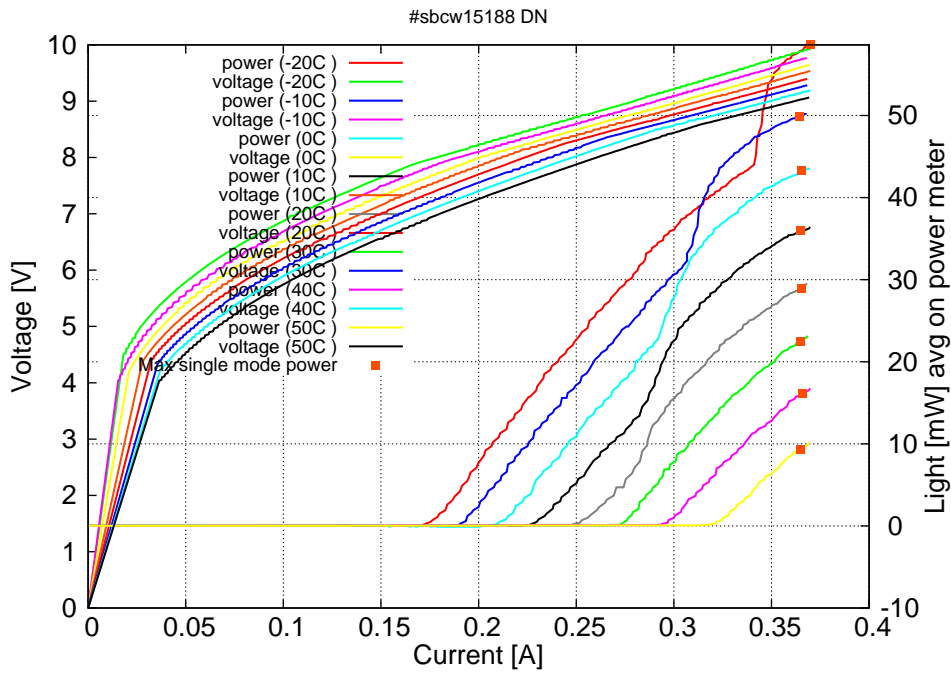


Figure 4: voltage and avg power vs current in continuous-wave operation (the solid squares indicate the maximum singlemode emitted power)

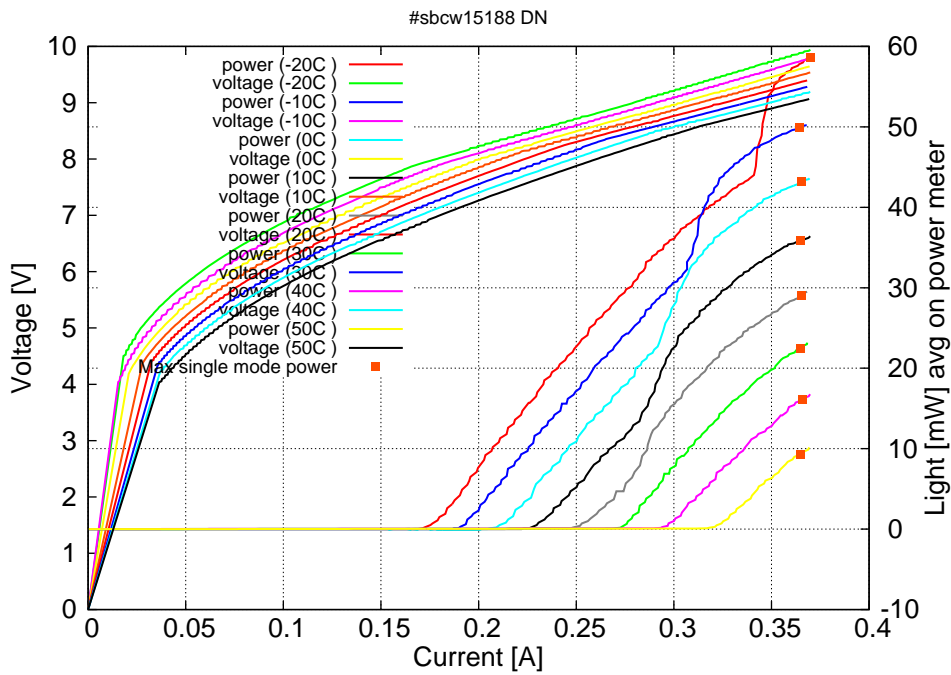
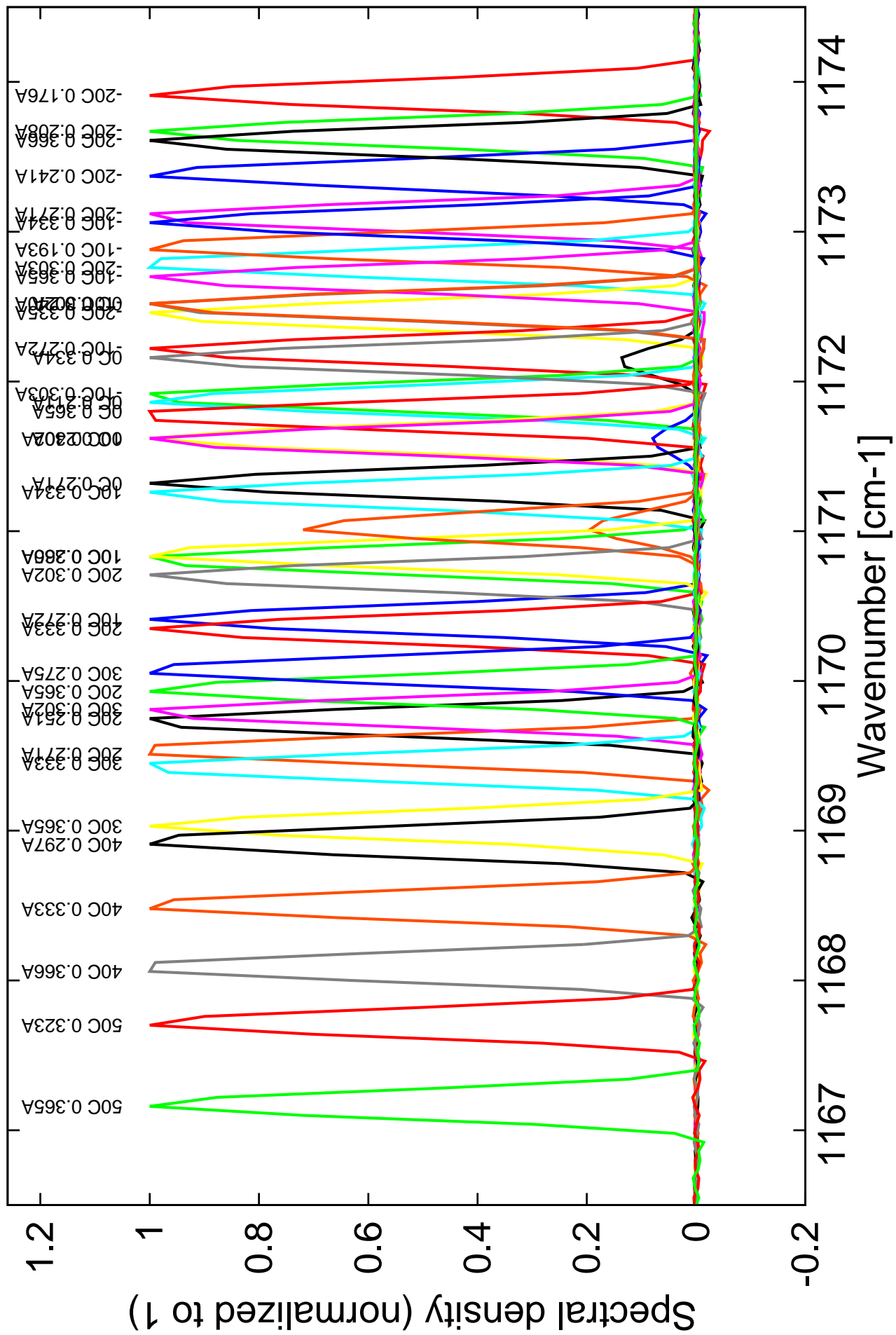


Figure 5: voltage and avg power vs current in continuous-wave operation (including the multimode region)

Note: at -20C: $I_{th}=0.17A$ / $V_{th}=7.9V$ (2-wires measurements). Maximum operation current: 0.370A for all temperatures.

Figure 4: spectra at different temperatures for various DC currents



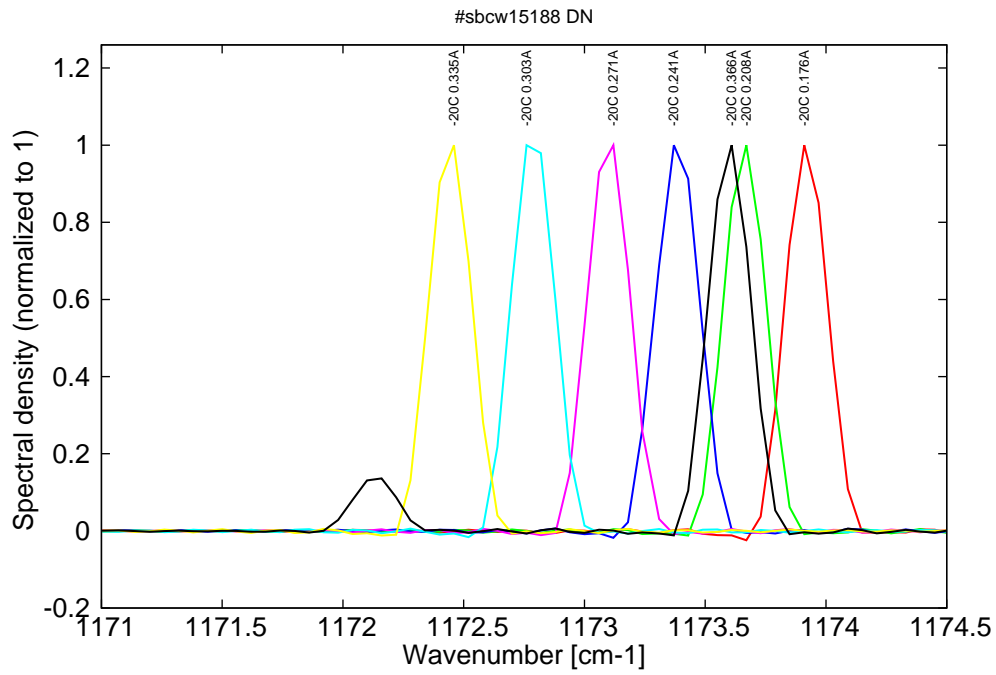


Figure 6: Spectra at -20C for various DC currents (monomode up to 0.35A, then becomes bimode)

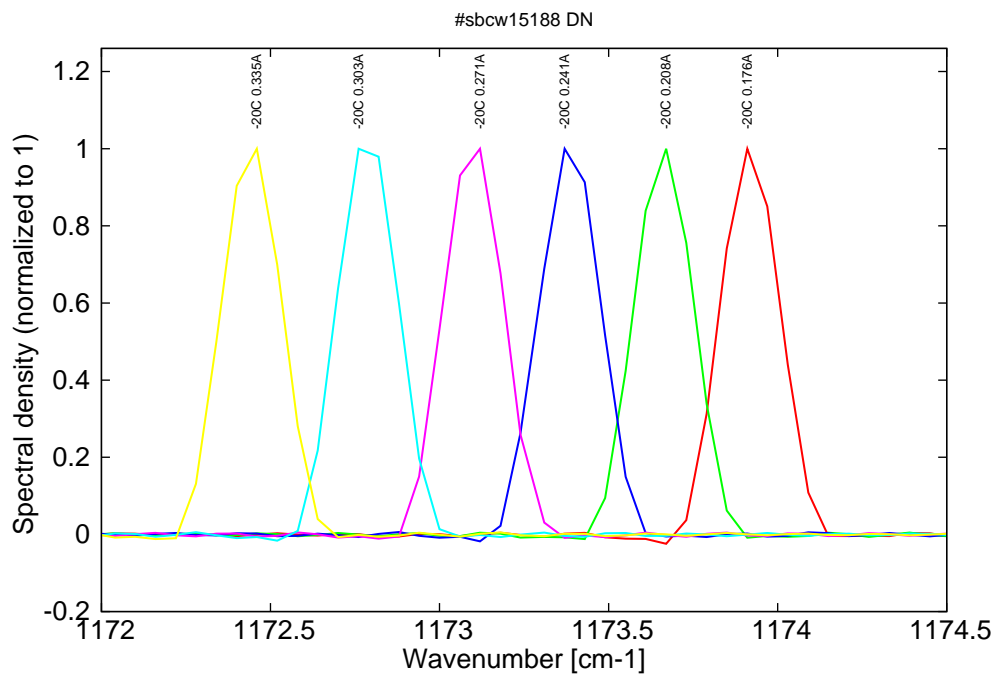


Figure 7: Spectra at -20C for various DC currents (monomode range)

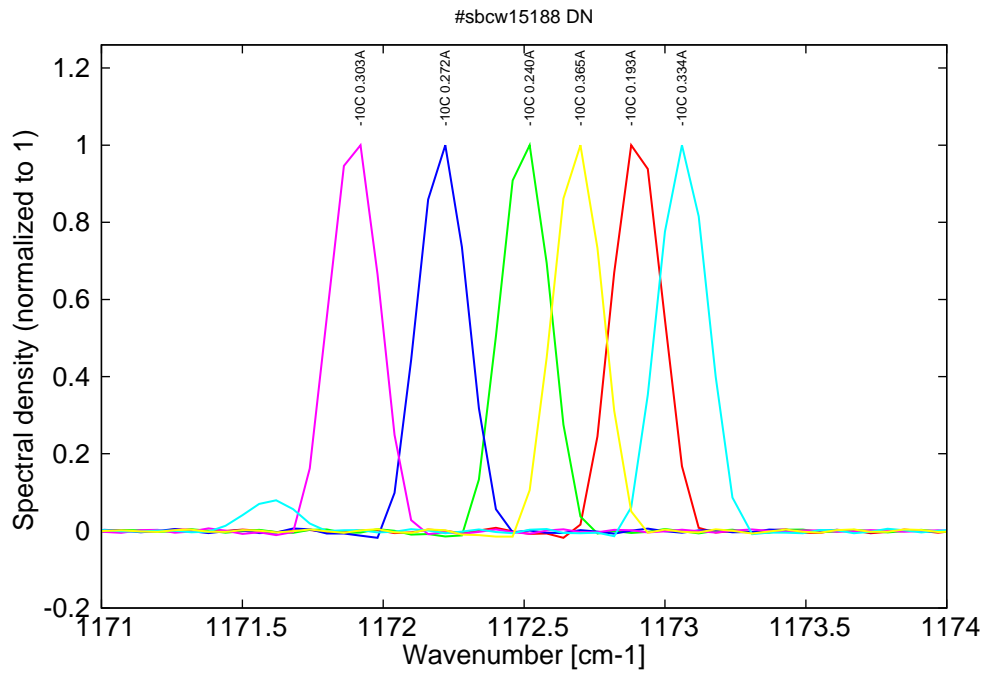


Figure 8: Spectra at -10C for various DC currents (monomode on mode 1 up to 0.31A, then becomes bimode up to 0.34A, then becomes monomode on mode 2)

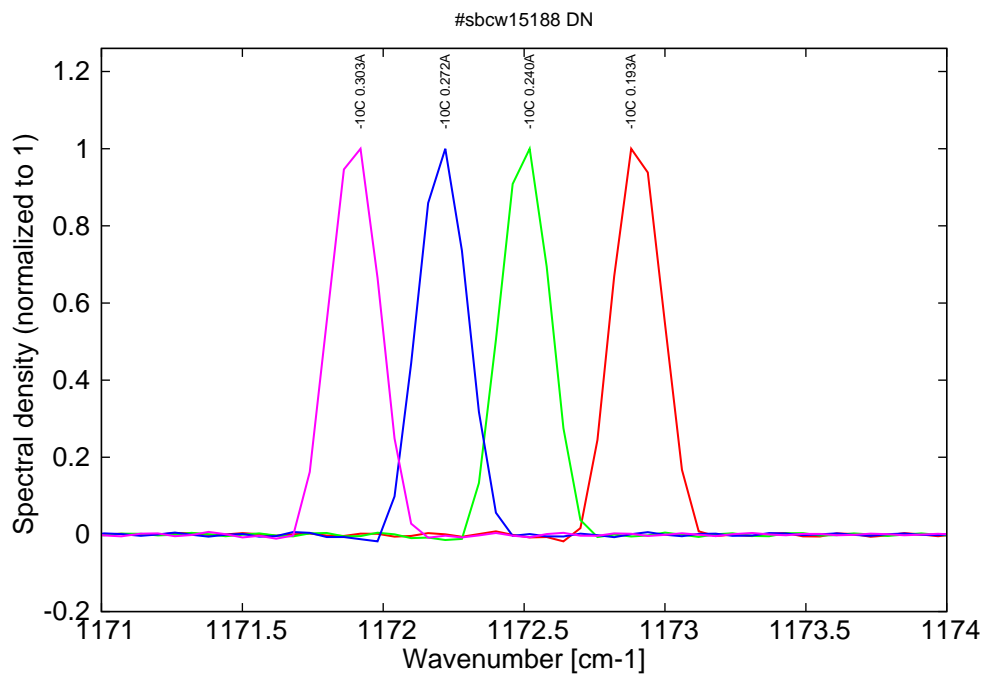


Figure 9: Spectra at -10C for various DC currents (monomode range on mode 1)

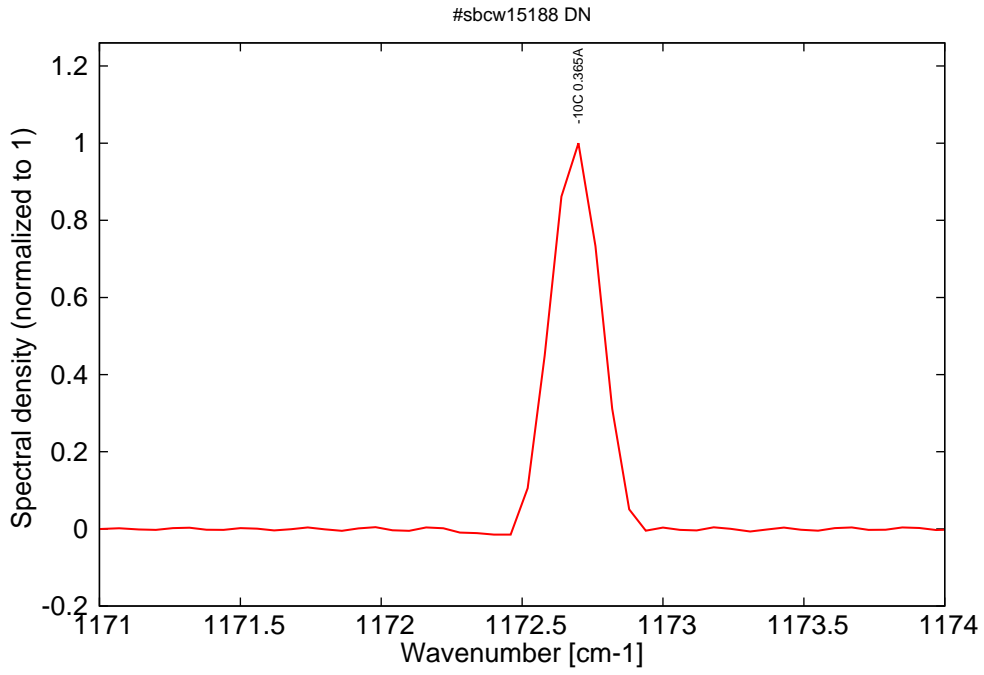


Figure 10: Spectrum at -10C for various DC currents (monomode range on mode 2)

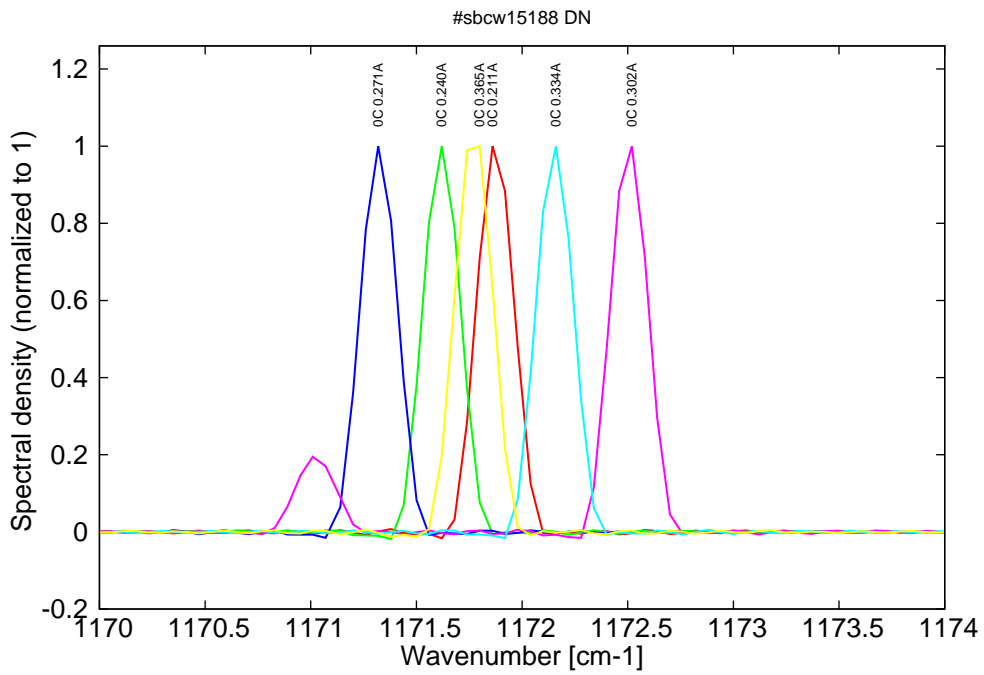


Figure 11: Spectra at 0C for various DC currents (monomode on mode 1 up to 0.28A, then becomes bimode up to 0.31A, then becomes monomode on mode 2)

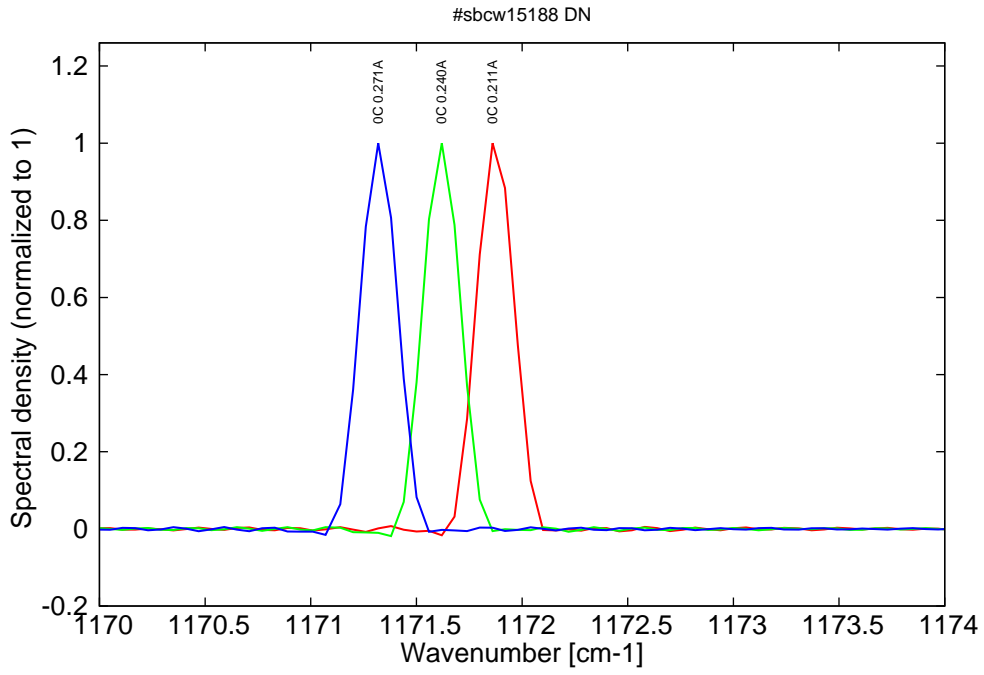


Figure 12: Spectra at 0C for various DC currents (monomode range on mode 1)

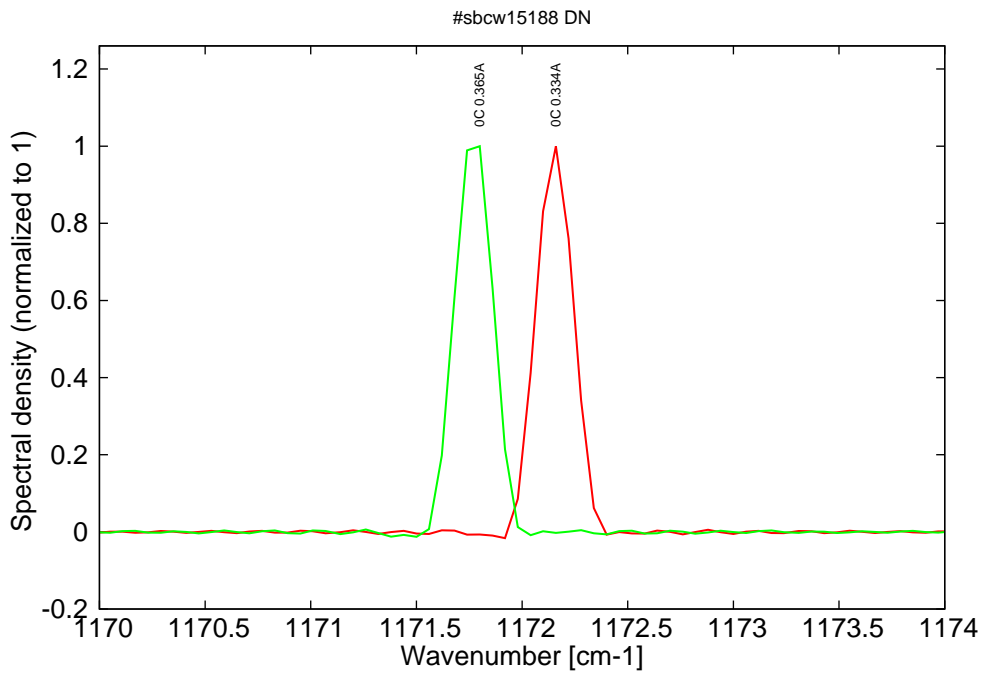


Figure 13: Spectra at 0C for various DC currents (monomode range on mode 2)

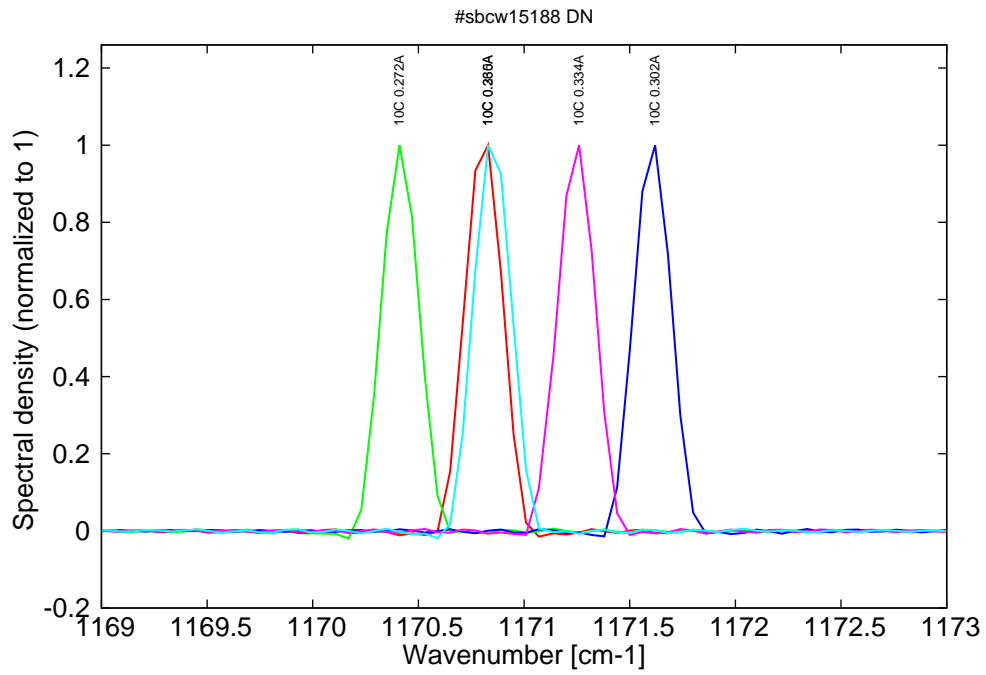


Figure 14: Spectra at 10C for various DC currents (monomode on mode 1 up to 0.28A, then becomes monomode on mode 2)

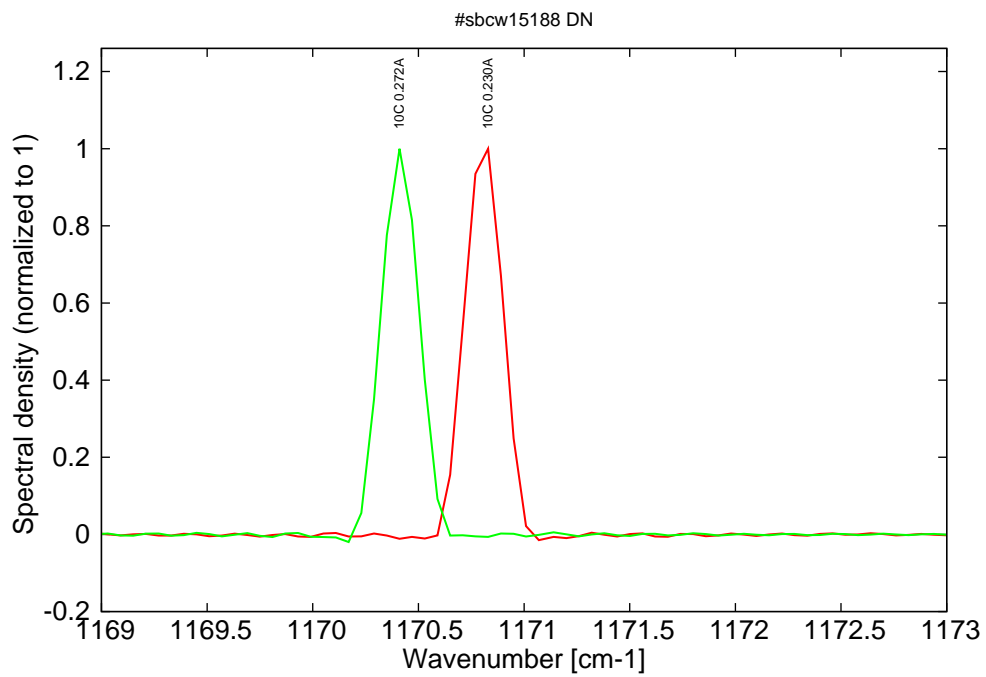


Figure 15: Spectra at 10C for various DC currents (monomode range on mode 1)

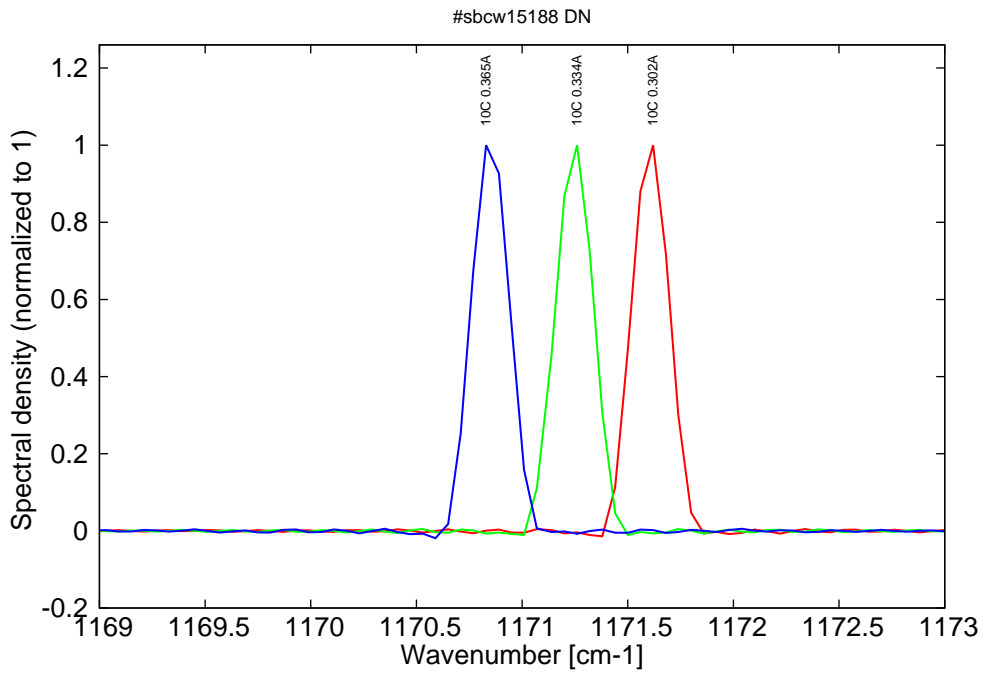


Figure 16: Spectra at 10C for various DC currents (monomode on mode 2)

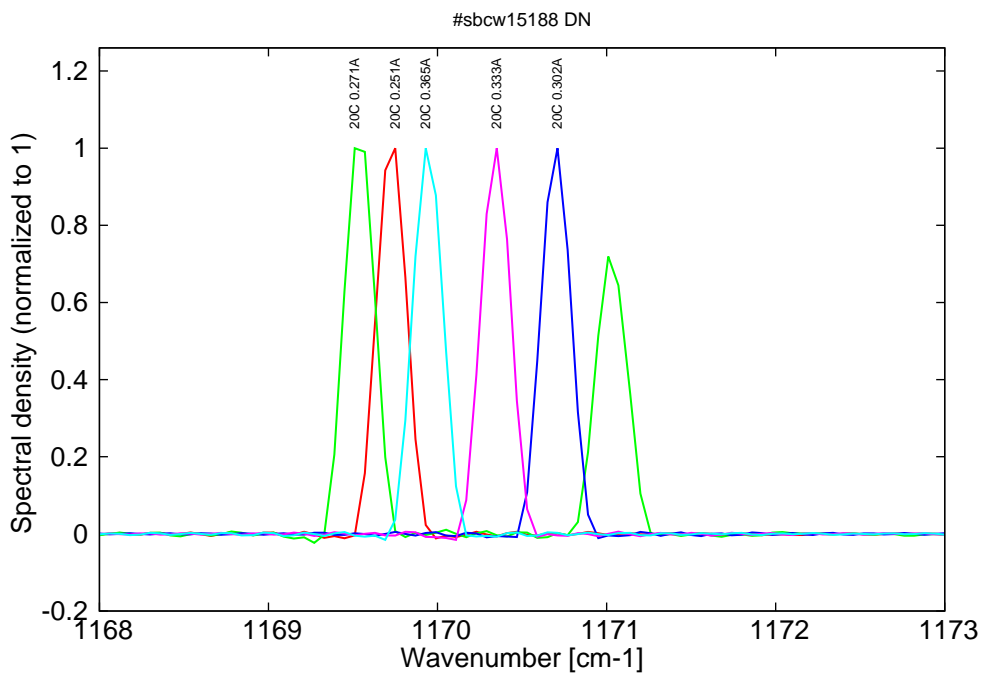


Figure 17: Spectra at 20C for various DC currents (monomode on mode 1 up to 0.26A, then becomes bimode up to 0.28A , then becomes monomode on mode 2)

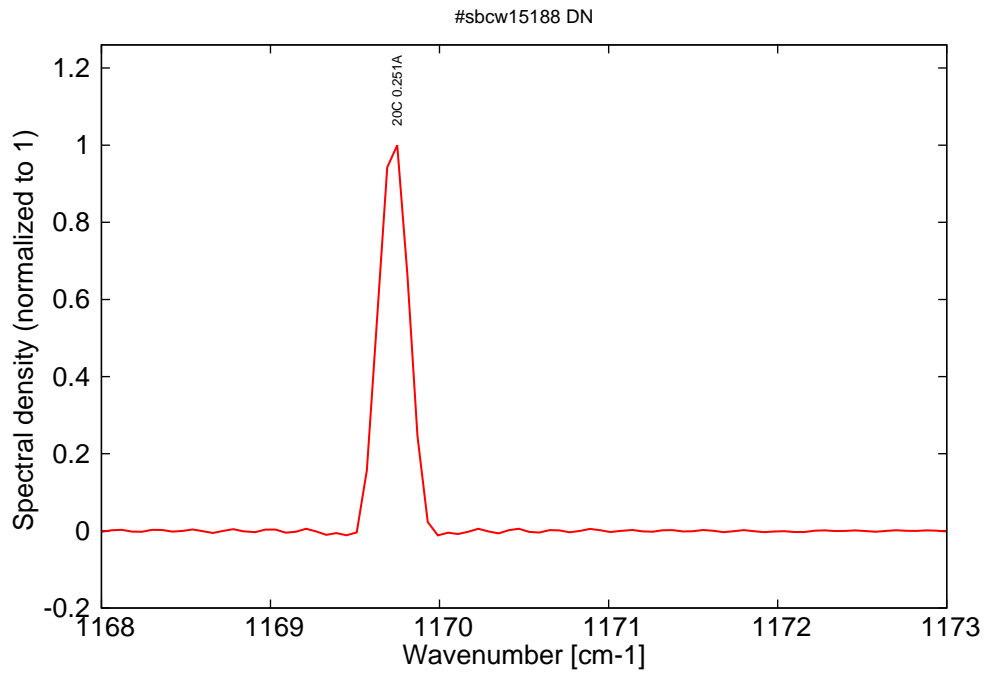


Figure 18: Spectrum at 20C for a defined DC current (monomode range on mode 1)

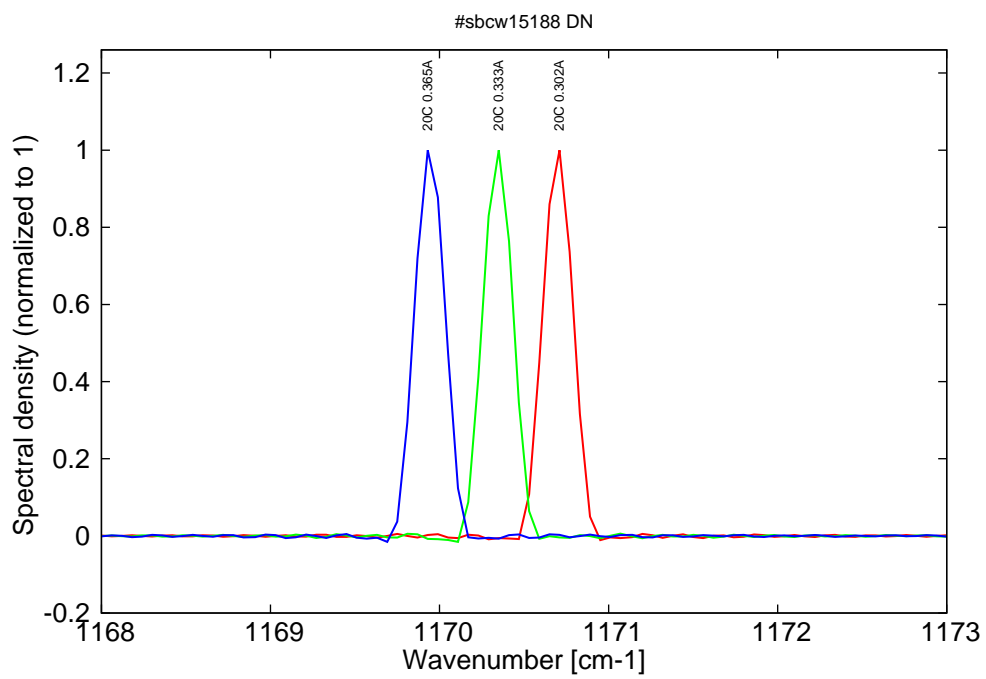


Figure 19: Spectra at 20C for various DC currents (monomode range on mode 2)

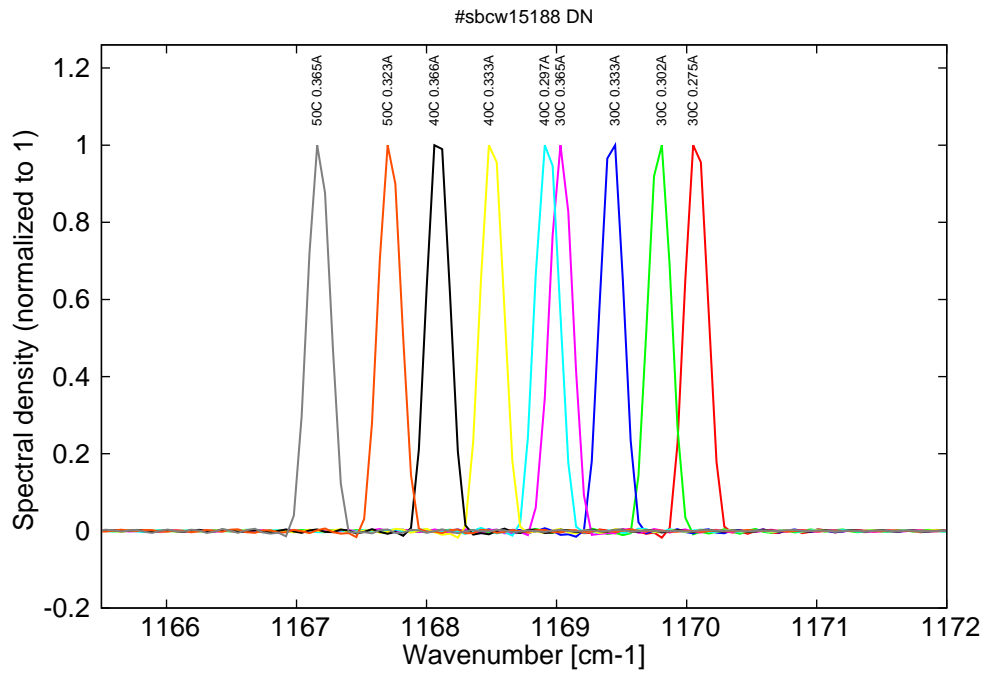


Figure 20: Spectra at 30C to 50C for various DC currents (monomode on mode 2)